



# YAMAHA



## PARTS CATALOGUE

# YW100 (4VP5)

174VP-200E1

# FOREWORD

The Parts Catalogue is related to the parts for the model(s) in the bellow frame. When you are ordering replacement parts please refer to this Parts Catalogue and quote both part numbers and part names correctly.

YW100(4VP5)

1. Modifications or additions which have been made after issue of the parts Catalogue will be announced in the Yamaha Parts News.

It is advisable that you make necessary corrections to the Parts Catalogue according to the Yamaha Parts News.

2. Abbreviations

The following abbreviations are used in this Parts Catalogue.

- "UR" Use specified parts number.
- "UN" Use as many as needed.
- "AP" Alternate Parts
- "LM" Local Made(Parts need to be ordered locally)
- "F#" Frame No.(Applicable machine No.)

3. Parts, which are to be supplied in an assembly, are listed with a dot(.) in front of the part name as shown below.

**EXAMPLE** CARBURETOR ASSY  
 .JET, PILOT  
 .NOZZLE, MAIN

4. Number of component for assembly

The numeral appearing to the right of each component part indicates the quantity of parts for each assembly unit.

**EXAMPLE**

PART NO.	DESCRIPTION	Q'TY	REMARKS
4DH-H3310-00	FRONT FLASHER LIGHT ASSY	1	
3UH-H3331-10	.BULB(6V-18W)	1	
3UH-H3312-01	.LENS, FLASHER	1	

5. Applicable colors of graphics are represented in the "REMARKS" as shown bellow.

**EXAMPLE**

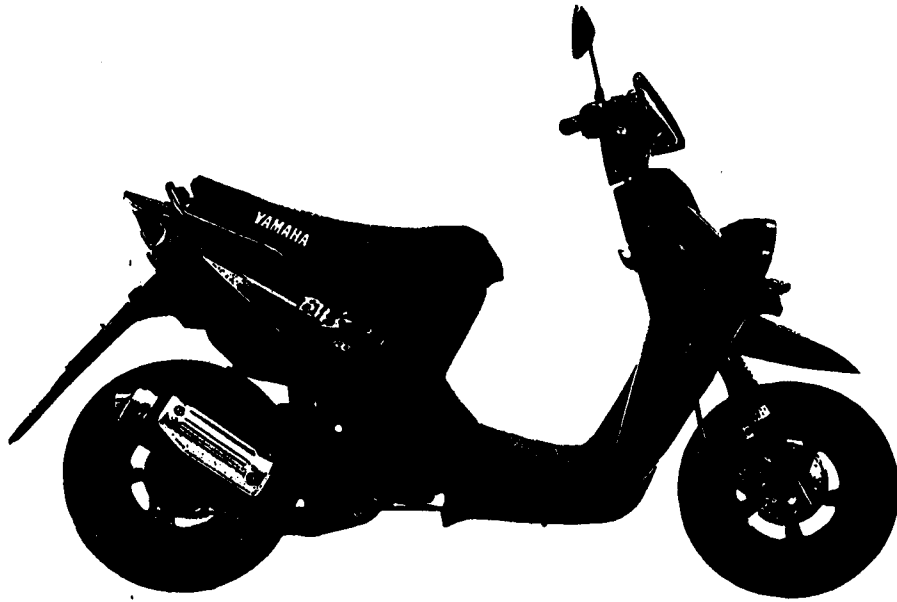
PART NO.	DESCRIPTION	Q'TY	REMARKS
2N4-24110-00-X5	FUEL TANK COMP.	1	MAXIM RED
3J1-24240-10	.GRAPHIC, FUEL TANK	1	for MXR

6. Applicable Serial No. and Code.

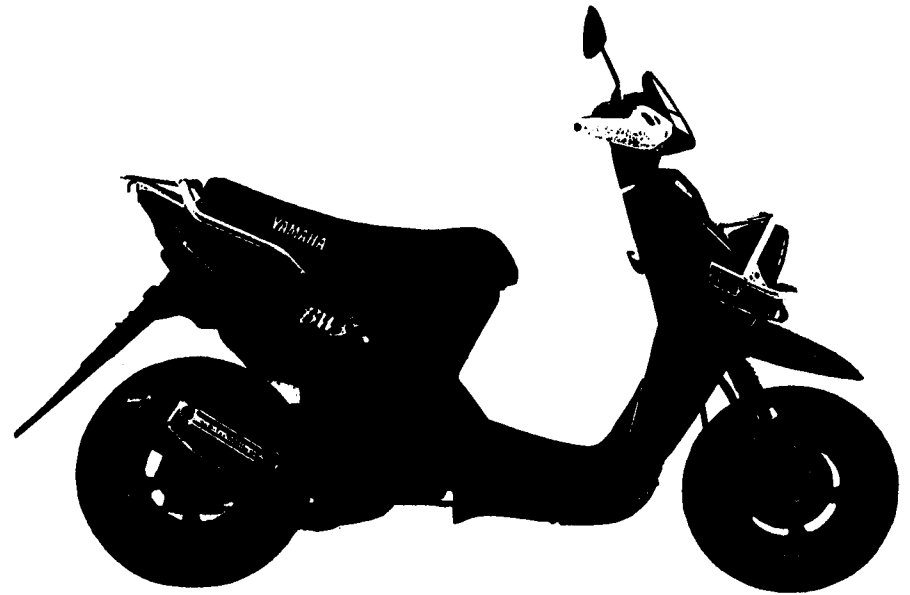
Destination	Frame Serial No.	Engine Serial No.
C.South America (CSA 200)	4VP-450101	4VP-450101
Greece (GRC 511)	*LPR4VP000* *00400101*	4VP-400101

Model	Color Code	Color Name	Abbreviation
4VP5	004B	BLACK 2	BL 2
	00J5	SPACE BLUE	SBE

7. Note that the illustrations are for reference in finding parts numbers, not to be used for assembling. When assembling, Please use the applicable service manual.
8. The asterisk(\*) before a reference number indicates modification items after the first edition.



Picture for reference only. please see the actual motorcycle.



A3

# CONTENTS

## ENGINE

FIG1	CYLINDER HEAD .....	1
FIG2	CRANKSHAFT. PISTON .....	2
FIG3	AIR SHROUD. FUN .....	3
FIG4	OIL PUMP .....	4
FIG5	INTAKE .....	5
FIG6	CARBURETOR .....	6
FIG7	EXHAUST .....	7
FIG8	CRANKCASE .....	8
FIG9	STARTER .....	10
FIG10	CLUTCH .....	11
FIG11	TRANSMISSION .....	13

## CHASSIS

FIG12	FRAME .....	14
FIG13	FRONT FENDER .....	15
FIG14	SIDE COVER .....	16
FIG15	OIL TANK .....	17
FIG16	REAR SUSPENSION .....	18
FIG17	FRONT FORK .....	19
FIG18	FUEL TANK .....	21
FIG19	SEAT .....	22
FIG20	FRONT WHEEL .....	23
FIG21	FRONT BRAKE CALIPER .....	24
FIG22	REAR WHEEL .....	25
FIG23	STEERING HANDLE. CABLE .....	26

FIG24	FRONT MASTER CYLINDER .....	27
FIG25	STAND .....	28
FIG26	LEG SHIELD .....	29
FIG27	COWLING 1 .....	30
FIG28	GENERATOR .....	31
FIG29	STARTING MOTOR .....	32
FIG30	FLASHER LIGHT .....	33
FIG31	METER .....	34
FIG32	HEADLIGHT .....	35
FIG33	TAILLIGHT .....	36
FIG34	HANDLE SWITCH. LEVER .....	37
FIG35	ELECTRICAL 1 .....	38
FIG36	ELECTRICAL 2 .....	39

## INDEX

NUMERICAL INDEX .....	40
-----------------------	----

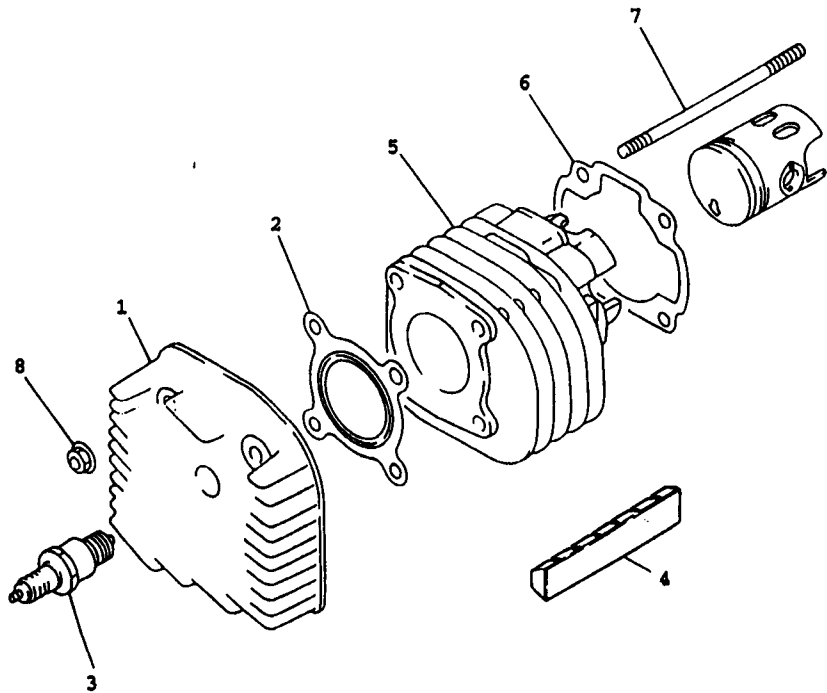
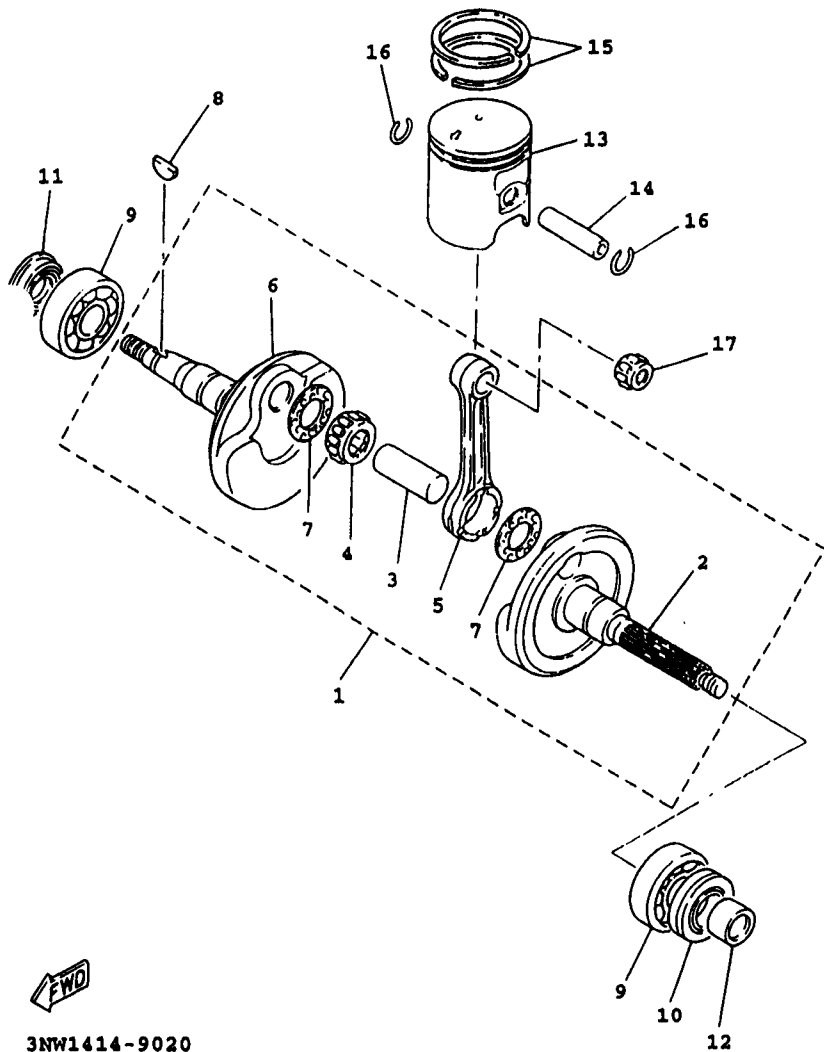


FIG. 1 CYLINDER

REF.				
NO.	PART NO.	DESCRIPTION	QTY	REMARKS
1	4VP-E1111-00	HEAD, CYLINDER 1	1	
2	4VP-E1181-00	GASKET, CYLINDER HEAD 1	1	
3	94700-00825	PLUG, SPARK	1	
4	4VP-E1162-00	ABSORBER 2	1	
5	4VP-E1311-00	CYLINDER 1	1	
6	4VP-E1351-00	GASKET, CYLINDER	1	
7	90116-07834	BOLT, STUD	4	
8	90179-07381	NUT	4	



4VP5200-7010



FWD

3NW1414-9020

FIG. 4 CRANKSHAFT, PISTON

REF. NO.	PART NO.	DESCRIPTION	Q'TY	REMARKS
1	4VP-E1400-00	CRANKSHAFT ASSY	1	
2	4VP-E1412-00	.CRANK 1	1	
3	4DM-E1681-00	.PIN, CRANK 1	1	
4	93310-418T0	.BRG.	1	
5	4VP-E1651-00	.ROD, CONNECTING	1	
6	4VP-E1422-00	.CRANK 2	1	
7	90209-18112	.WASHER	2	
8	90280-03017	KEY, WOODRUFF	1	
9	93306-205Y6	BRG.	2	
10	93102-22464	SEAL, OIL	1	
11	93101-20169	SEAL, OIL	1	
12	90387-178N6	COLLAR	1	
13	4VP-E1631-10-A0	PISTON (STD)	1	
	4VP-E1631-19	PISTON (52.010mm)	1	
	4VP-E1631-29	PISTON (52.020mm)	1	
	4VP-E1631-39	PISTON (52.030mm)	1	
	4VP-E1636-00	PISTON (0.5mm O/S)	1	
14	4VP-E1633-00	PIN, PISTON	1	
15	3YR-11603-00	PISTON RING SET (STD)	1	
	3YR-11605-00	PISTON RING SET (0.5mm O/S)	1	
16	93450-16115	CIRCLIP	2	
17	93310-21403	BRG.	1	

B3

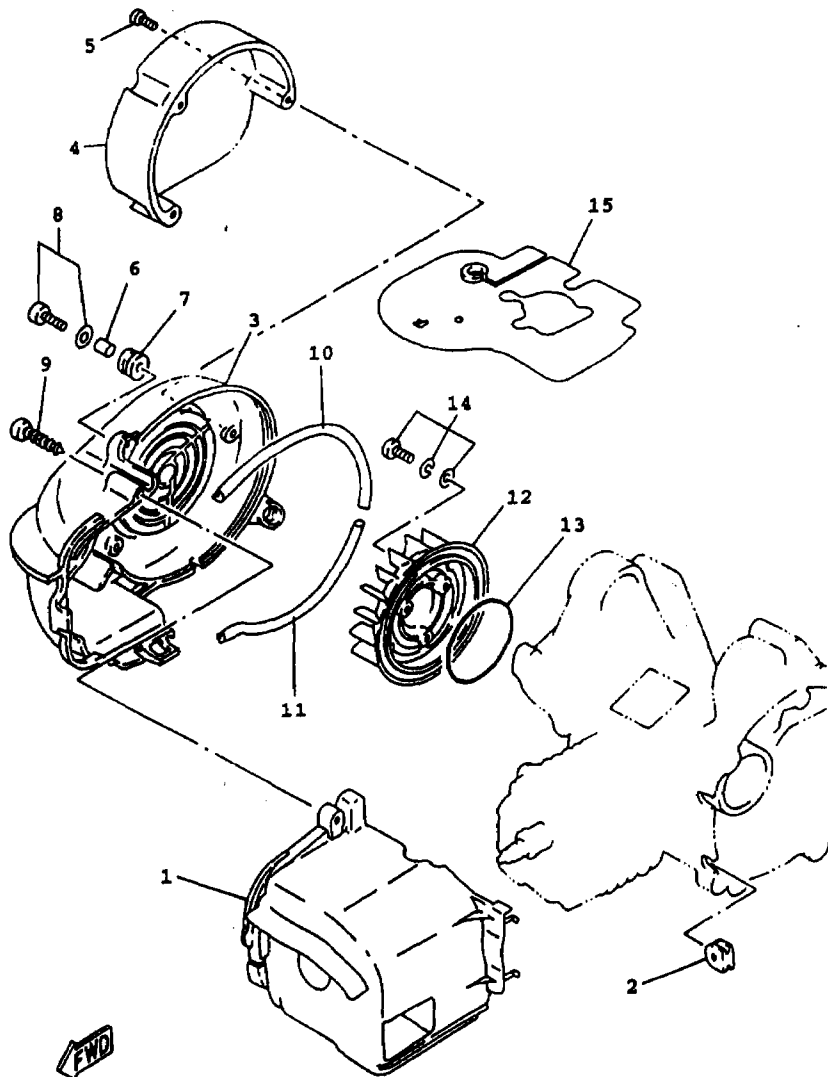
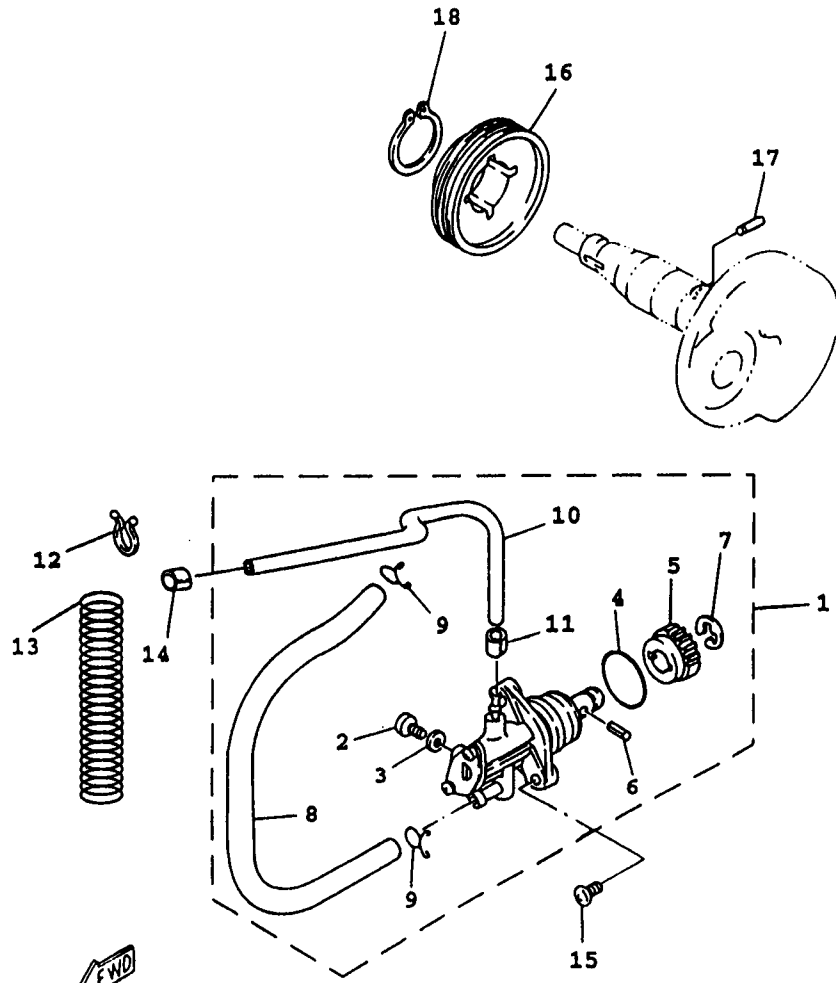


FIG. 3 AIR SHROUD, FAN

NO.	PART NO.	DESCRIPTION	Q'TY	REMARKS
1	4VP-E2651-00	AIR SHROUD, CYLINDER 1	1	
2	90480-11866	GROMMET	1	
3	4VP-E2653-00	AIR SHROUD, CYLINDER 3	1	
4	4DY-E262H-00	GUIDE, 1	1	
5	97707-40514	SCREW, TAPPING	3	
6	90387-068J5	COLLAR	3	
7	90480-12497	GROMMET	3	
8	97607-06220	SCREW, W/WASHER	3	
9	97707-60540	SCREW, TAPPING	1	
10	4VP-E2658-00	DAMPER, AIR SHROUD 1	1	
11	4VP-E2659-00	DAMPER, AIR SHROUD 2	1	
12	4VP-E2611-00	FAN	1	
13	93210-64893	O-RING	1	
14	97607-06216	SCREW, W/WASHER	3	
15	3XG-E2631-00	DEFLECTOR 1	1	

4VP1414-7030



4VP1414-7040

REF. NO.	PART NO.	DESCRIPTION	Q'TY	REMARKS
1	4VP-E3100-00	OIL PUMP ASSY	1	
2	3WF-13185-00	.BOLT, BREATHER	1	
3	1YU-13187-00	.GASKET, BREATHER BOLT	1	
4	1YU-13473-00	.O-RING	1	
5	3AA-13124-00	.GEAR, WORM WHEEL	1	
6	1YU-13516-00	.PIN, DOWEL	1	
7	1YU-13577-00	.CLIP	1	
8	90445-09124	.HOSE	1	
9	90467-08003	CLIP	2	
10	90445-05431	HOSE	1	
11	90468-02033	.CLIP	1	
12	90464-16801	CLAMP	1	
13	90501-08845	SPRING, COMPRESSION	1	
14	90468-02033	CLIP	1	
15	98507-05014	SCREW, PAN HEAD	2	
16	4VP-13178-00	GEAR, PUMP DRIVE	1	
17	93603-12827	PIN DOWEL	1	
18	99009-19400	CIRCLIP	1	

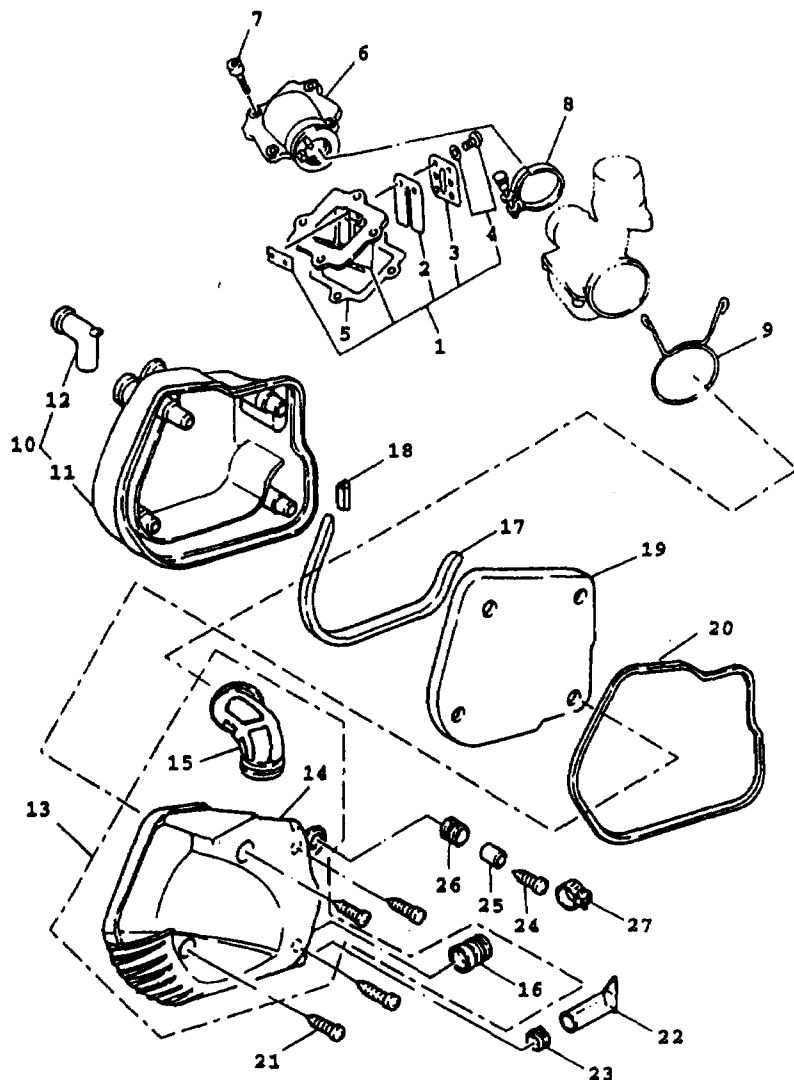


FIG. 5 INTAKE

REF.	NO.	PART NO.	DESCRIPTION	Q'TY	REMARKS
	1	4VP-E3610-00	REED VALVE ASSY	1	
	2	3XG-E3613-00	.REED, VALVE	2	
	3	3XG-E3616-00	.STOPPER, REED VALVE	2	
	4	97607-03206	.SCREW, W/WASHER	4	
	5	3XG-E3621-00	GASKET, VALVE SEAT	1	
	6	3XG-E3555-10	MANIFOLD, INTAKE	1	
	7	91318-06020	BOLT	4	
	8	3XG-E3575-01	BAND	1	
	9	90467-24140	CLIP	1	
	10	4VP-W1441-00	AIR CLEANER CASE COMP.	1	
	11	4VP-E4411-00	.CASE, AIR CLEANER 1	1	
	12	4VP-E4437-00	.DUCT	1	
	13	4VP-W1442-00	AIR CLEANER CASE COMP	1	
	14	4VP-E4412-00	.CAP, CLEANER CASE 1	1	
	15	4VP-E4453-00	.JOINT, AIR CLEANER 1	1	
	16	4VP-E4463-00	.JOINT, AIR CLEANER 2	1	
	17	4VP-E4462-00	SEAL	1	
	18	4VP-E4467-00	SEAL	1	
	19	4VP-E4451-00	ELEMENT, AIR CLEANER	1	
	20	4VP-E4452-00	SEAL	1	
	21	97707-50125	SCREW, TAPPING	4	
	22	4VP-E443E-00	PIPE, DRAIN	1	
	23	90467-11823	CLIP	1	
	24	97607-06220	SCREW, W/WASHER	1	
	25	90387-068J5	COLLAR	1	
	26	90480-12497	GROMMET	1	
	27	90460-41191	CLAMP, HOSE	1	

FWD

4VP5200-7050

FIG. 6 CARBURETOR

REF.	NO.	PART NO.	DESCRIPTION	Q'TY	REMARKS
	1	4VP-E4101-20	CARBURETOR ASSY 1	1	
	2	3XG-14198-00	.GASKET	1	
	3	52W-14131-00	.SPRING, THROTTLE VALVE	1	
	4	97607-04112	.SCREW, W/WASHER	2	
	5	4VP-14112-35	.VALVE, THROTTLE 1	1	
	6	4VP-1490J-00	.NEEDLE SET	1	
	7	4VP-14141-11	.NOZZLE, MAIN	1	
	8	3XG-14997-00	.SEAL	1	
	9	18A-1414A-65	.JET, MAIN	1	
	10	3XG-14196-00	.PIPE	1	
	11	193-14142-35	.JET, PILOT	1	
	12	3MB-14104-00	.AIR SCREW SET	1	
	13	12R-14191-00	.PLUG, DRAIN	1	
	14	97607-04108	.SCREW, W/WASHER	2	
	15	98507-03006	.SCREW, PAN HEAD	1	
	16	4VP-14171-00	.PLUNGER, STARTER	1	
	17	52W-14147-00	.O-RING	1	
	18	3XG-14103-00	.THROTTLE SCREW SET	1	
	19	3XG-14107-00	.NEEDLE VALVE SET	1	
	20	53L-14186-00	.PIN, FLOAT	1	
	21	98507-04012	.SCREW, PAN HEAD	4	
	22	522-14161-00	.NUT, CABLE ADJUSTING	1	
	23	1MH-F6329-00	CAP, RUBBER	1	

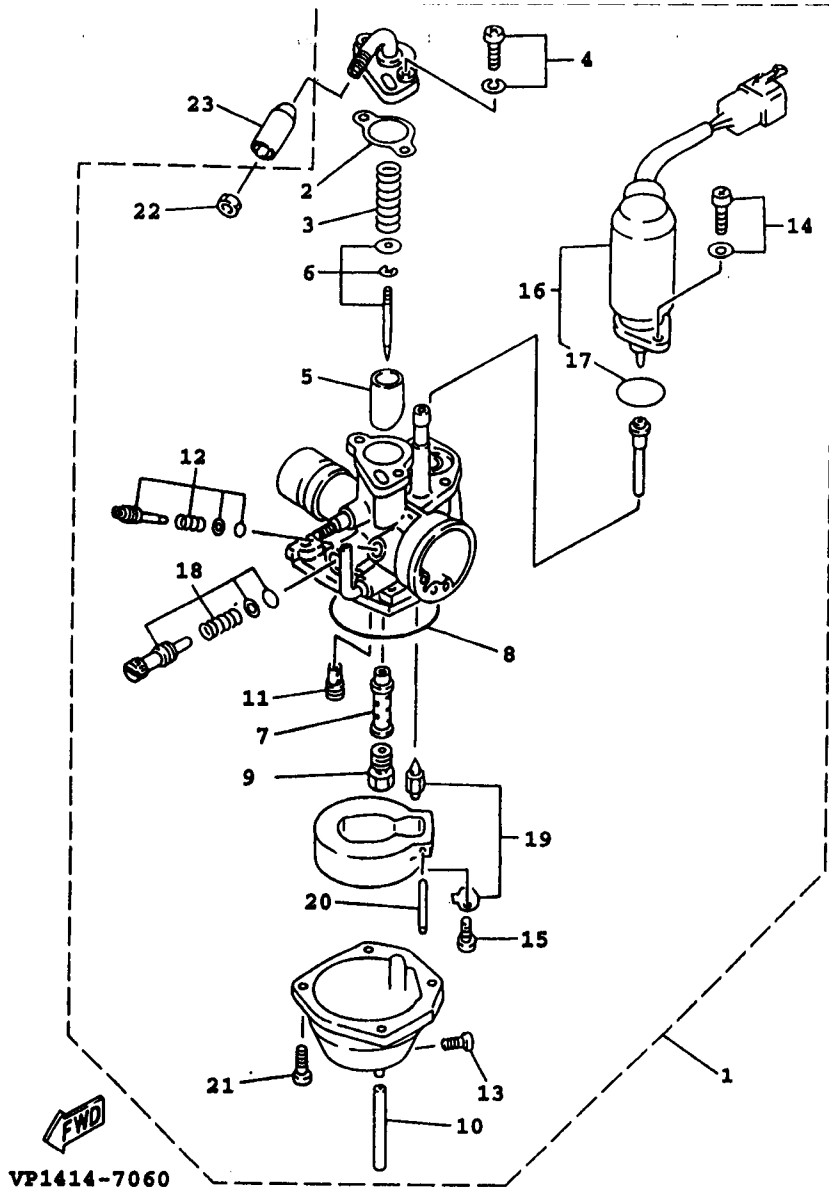
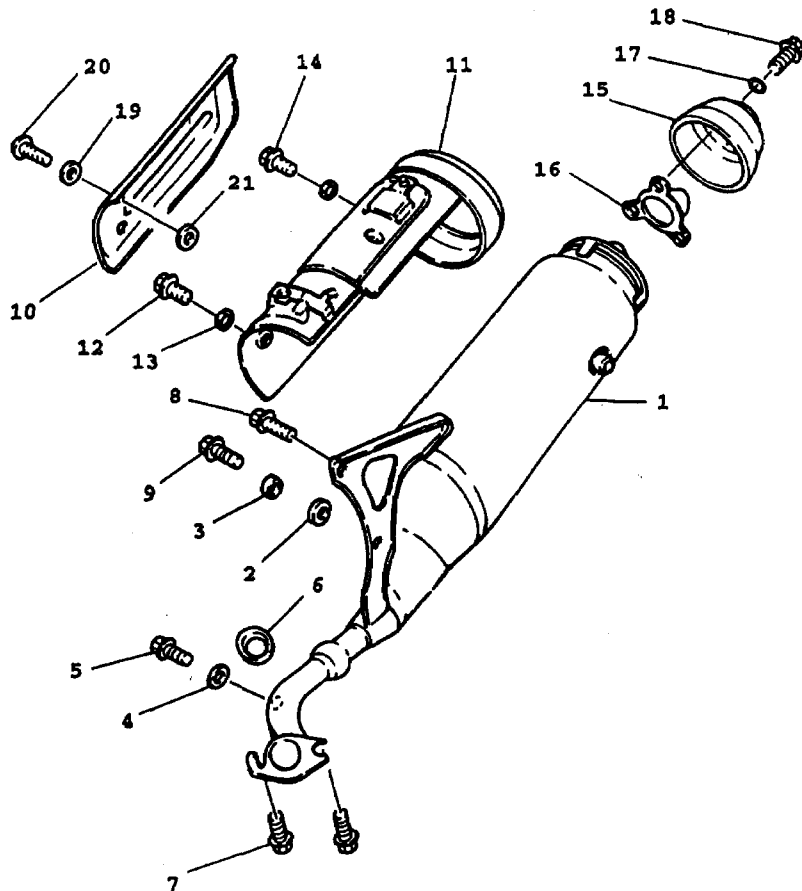


FIG. 7 EXHAUST



REF.

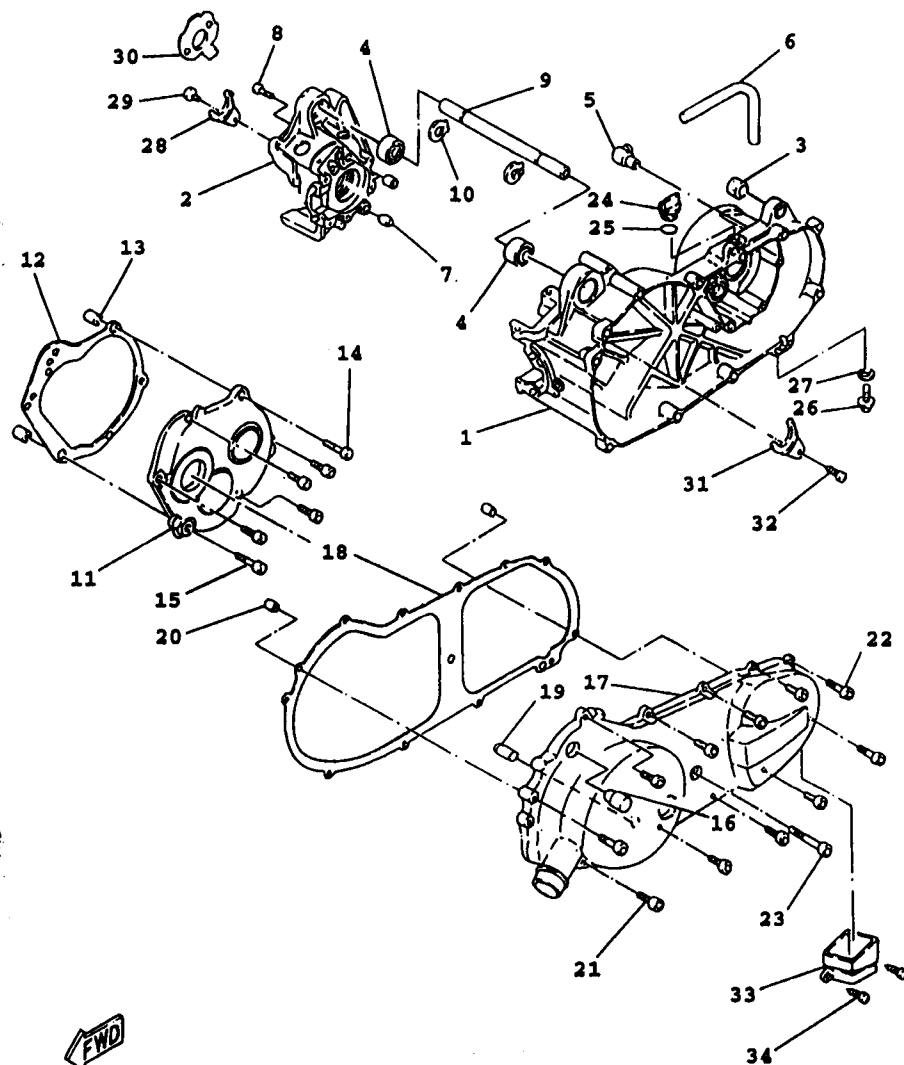
NO.	PART NO.	DESCRIPTION	Q'TY	REMARKS
1	4VP-E4610-20-98	EXHAUST PIPE ASSY 1	1	LOW GLOSS BLACK
2	4VP-E4445-00	GROMMET	1	
3	4VP-E4779-00	COLLAR	1	
4	92990-06600	WASHER, PLATE	1	
5	97380-06008	BOLT	1	
6	1NT-E4613-00	GASKET, EXHAUST PIPE	1	
7	90149-06810	SCREW	2	
8	95817-08020	BOLT, FLG	1	
9	95817-08030	BOLT, FLG	1	
10	4VP-E4708-00	PROTECTOR ASSY	1	
11	4VP-E4627-00	EXHAUST COVER ASSY	1	
12	97017-06010	BOLT, HEX	2	
13	4CW-E4766-00	WASHER, PROTECTOR	4	
14	97517-06510	BOLT, W/WASHER	3	
15	4VP-E4799-00	CAP	1	
16	4VP-E475M-00	PIPE, 9	1	
17	92907-06200	WASHER, PLATE	3	
18	90176-06065	NUT, CROWN	3	
19	4CW-E4766-00	WASHER, PROTECTOR	3	
20	98980-06012	SCREW, BINDING HEAD (+)	3	
21	4UE-E4766-00	WASHER, PROTECTOR	3	



4VP5200-7070

B8

FIG. 8 CRANKCASE



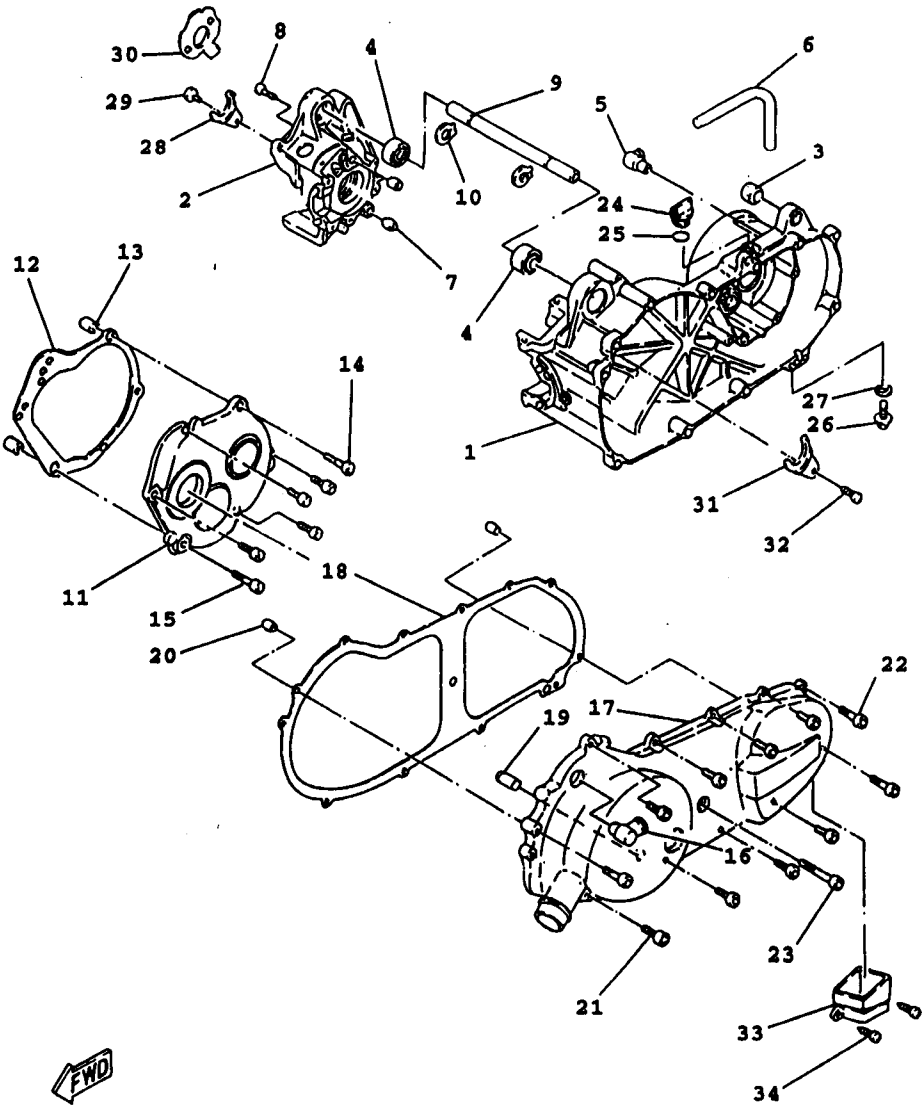
4VP5200-7080

REF.	NO.	PART NO.	DESCRIPTION	Q'TY	REMARKS
	1	4VP-E5111-00	CRANKCASE 1	1	
	2	4VP-E5121-00	CRANKCASE 2	1	
	3	4X6-F2216-00	BUSH, REAR SHOCK ABSORBER	1	
	4	93306-003Y4	BRG.	2	
	5	3XG-E5371-00	BREATHER	1	
	6	4VP-E5373-00	PIPE, BREATHER	1	
	7	99530-12016	PIN, DOWEL	2	
	8	91318-06035	BOLT	6	
	9	3XG-E5317-00	SPACER, ENGINE MOUNT	1	
	10	99009-17400	CIRCLIP	2	
	11	4VP-E5421-00	COVER, CRANKCASE 2	1	
	12	4VP-E5461-00	GASKET, CRANKCASE COVER 2	1	
	13	99530-10114	PIN, DOWEL	2	
	14	91318-06035	BOLT	2	
	15	91318-06020	BOLT	4	
	16	4VP-E5439-00	PLUG	1	
	17	4VP-E5411-00-33	COVER, CRANKCASE 1	1	YAMAHA BLACK
	18	4VP-E5451-00	GASKET, CRANKCASE COVER 1	1	
	19	4VP-E5659-00	SHAFT	1	
	20	99530-10114	PIN, DOWEL	2	
	21	91317-06025	BOLT, HEX. SOCKET	9	
	22	91317-06035	BOLT, HEX. SOCKET	2	
	23	91317-06045	BOLT, HEX. SOCKET	1	
	24	4Y4-E5363-00	PLUG, OIL	1	
	25	93210-14805	O-RING	1	
	26	95807-08016	BOLT, FLG	1	
	27	90430-08119	GASKET	1	
	28	4VP-E5128-00	HOLDER	1	

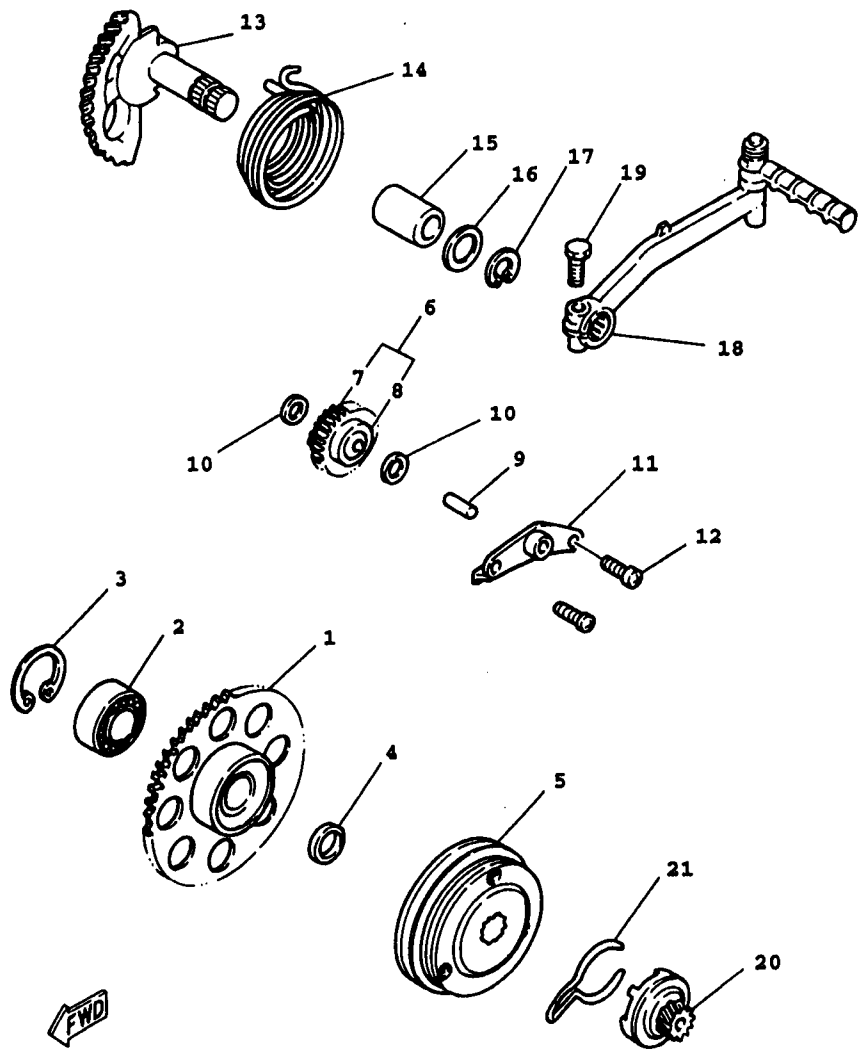
FIG. 8 CRANKCASE

REF.

NO.	PART NO.	DESCRIPTION	QTY	REMARKS
29	98507-06012	SCREW, PAN HEAD	1	
30	3XG-E5462-00	GASKET, CRANKCASE COVER 3	1	
31	4VP-E5118-00	HOLDER	1	
32	98507-06012	SCREW, PAN HEAD	1	
33	4VP-E5477-00	DUCT, AIR	1	
34	97607-06220	SCREW, W/WASHER	2	



4VP1414-7080



FWD

4VP1414-7090

FIG. 9 STARTER

REF.	NO.	PART NO.	DESCRIPTION	Q'TY	REMARKS
	1	4VP-E5524-00	WHEEL, STARTER	1	
	2	93306-003Y4	BRG.	1	
	3	93450-35015	CIRCLIP	1	
	4	90201-163G6	WASHER, PLATE	1	
	5	4CW-E5570-00	STARTER CLUTCH ASSY	1	
	6	4VP-E5650-00	IDLE GEAR ASSY	1	
	7	4VP-E5512-00	.GEAR, IDLER 1	1	
	8	93315-108Y4	.BRG.	1	
	9	3XG-E3342-00	SHAFT, IDLE GEAR	1	
	10	90201-08088	WASHER, PLATE	2	
	11	3XG-E5532-00	PLATE, IDLE GEAR	1	
	12	98507-06012	SCREW, PAN HEAD	2	
	13	4VP-E5601-00	KICK SHAFT ASSY	1	
	14	90508-32768	SPRING, TORSION	1	
	15	90380-15817	BUSH, SOLID	1	
	16	90201-155G5	WASHER, PLATE	1	
	17	99009-15400	CIRCLIP	1	
	18	3XG-E5620-00	KICK CRANK ASSY	1	
	19	97017-06025	BOLT, HEX	1	
	20	4VP-E5630-00	KICK PINION ASSY	1	
	21	4VP-E5673-00	CLIP	1	

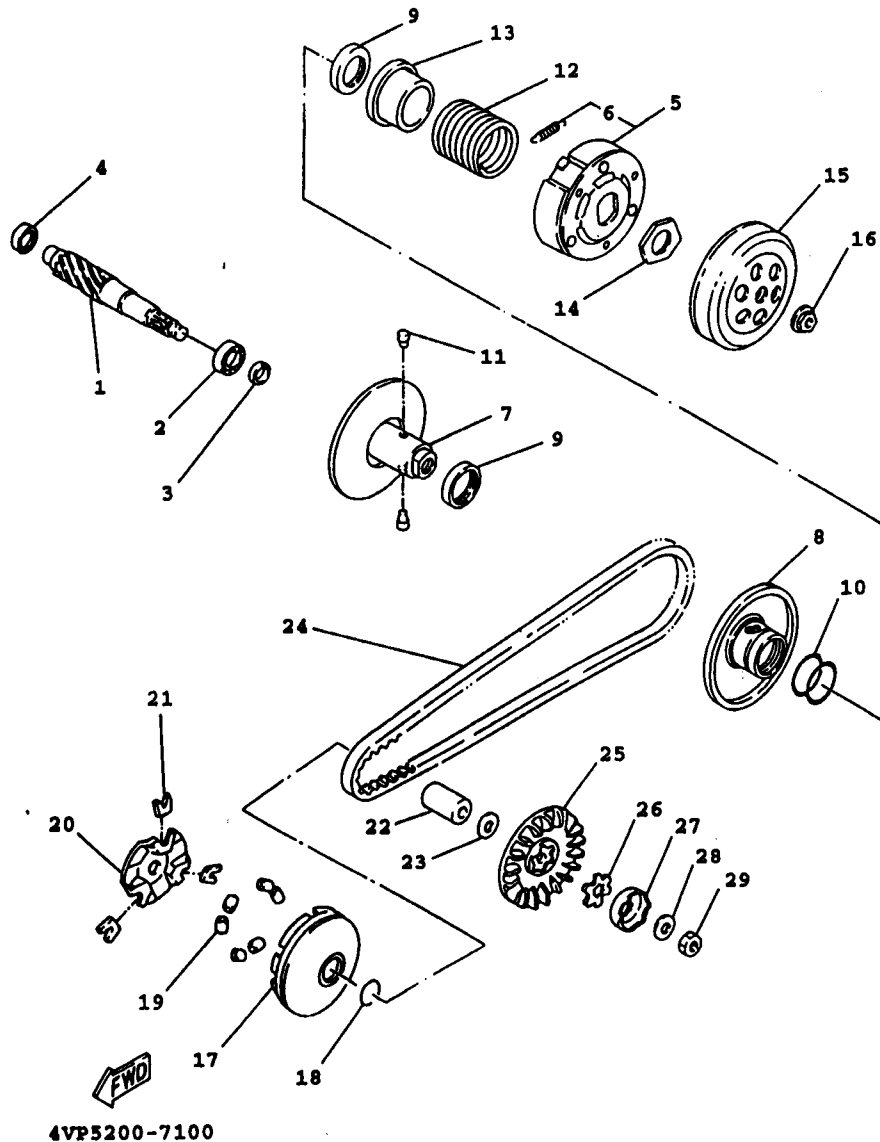


FIG. 10 CLUTCH

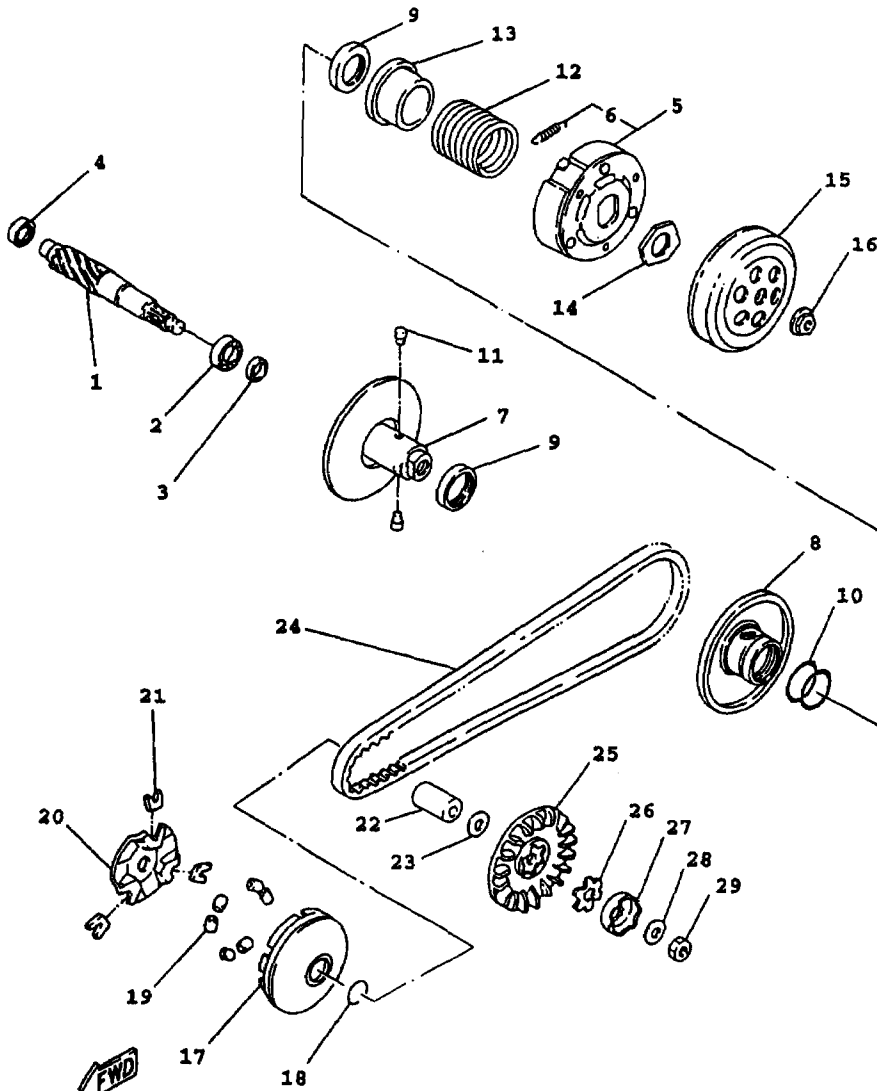
REF.

NO.	PART NO.	DESCRIPTION	QTY	REMARKS
1	4VP-16111-00	GEAR, PRIMARY DRIVE	1	
2	93306-20310	BEARING (B6203)	1	
3	93102-17467	SEAL, OIL	1	
4	93306-200Y1	BRG.	1	
5	4VP-16620-00	CLUTCH CARRIER ASSY	1	
6	17L-16626-00	.SPRING, CLUTCH WEIGHT 1	3	
7	4VP-17660-00	SECONDARY FIXED SHEAVE COMP.	1	
8	3FC-17670-00	SECONDARY SLIDING SHEAVE	1	
9	93109-33052	SEAL, OIL	2	
10	93210-384A6	O-RING	2	
11	24G-17664-00	PIN, GUIDE	2	
12	90501-430K3	SPRING, COMPRESSION	1	
13	3XG-17684-00	SEAT, SECONDARY SPRING	1	
14	90179-28415	NUT	1	
15	4VP-E6611-00	CLUTCH HOUSING COMP.	1	
16	90179-10609	NUT	1	
17	4VP-E7620-00	PRIMARY SLIDING SHEAVE COMP.	1	
18	93101-21170	SEAL, OIL	2	
19	4VP-17632-00	WEIGHT	6	
20	4VP-E7623-00	CAM	1	
21	4CW-17653-10	SLIDER	3	
22	90387-168N7	COLLAR	1	
23	90201-166L3	WASHER, PLATE	1	
24	4VP-17641-00	V-BELT	1	
25	4VP-E7611-00	SHEAVE, PRIMARY FIXED	1	
26	90214-14054	WASHER, CLAW	1	
27	14T-15657-00	CLUTCH, ONEWAY	1	
28	90208-12050	WASHER, CONICAL SPRING	1	

FIG. 29 EXPLODED

REF.

NO.	PART NO.	DESCRIPTION	QTY	REMARKS
29	95307-12700	NUT, HEXAGON	1	

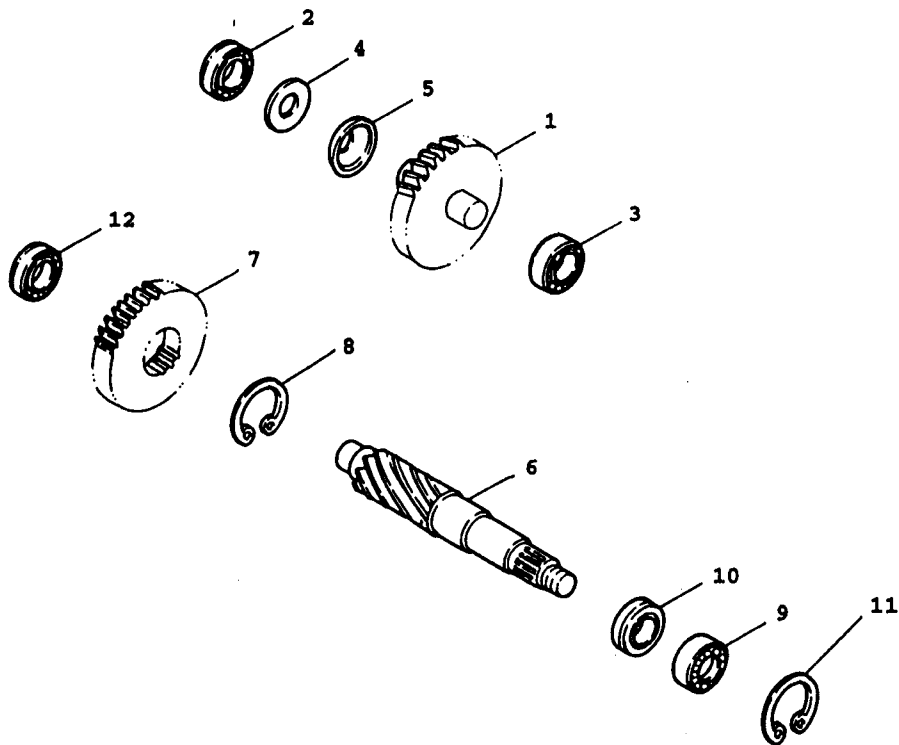


4VP5200-7100

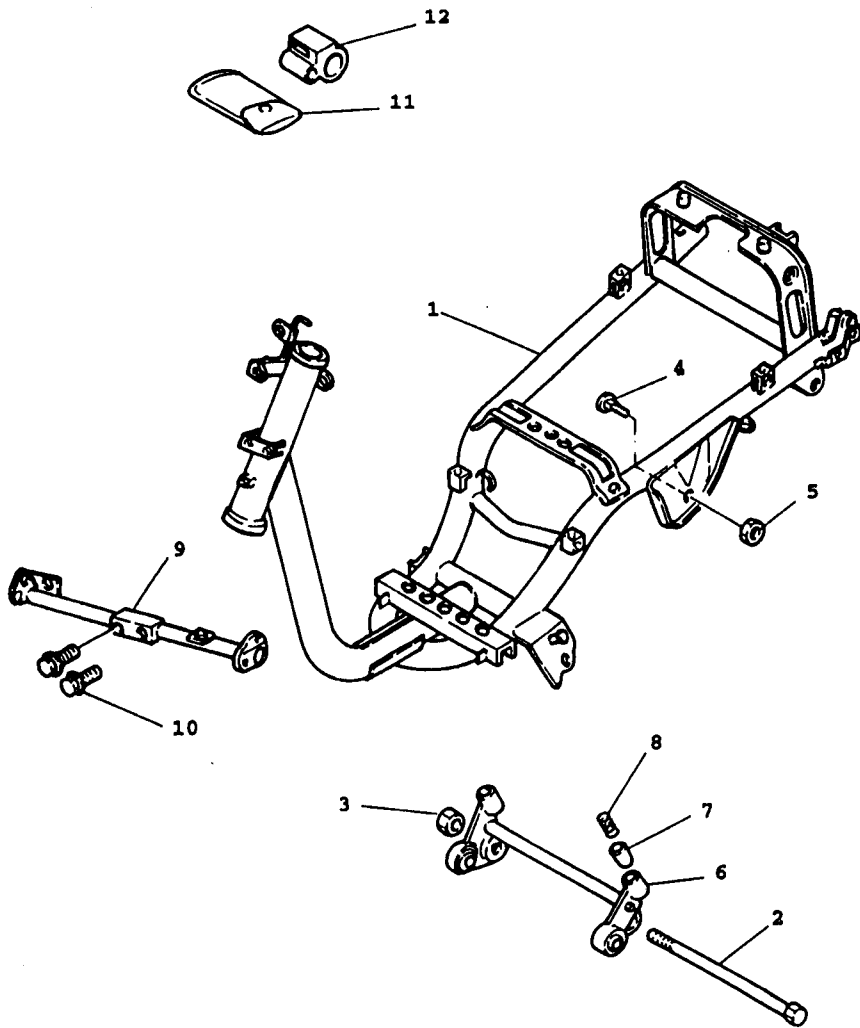
FIG. 11 TRANSMISSION

REF.

NO.	PART NO.	DESCRIPTION	QTY	REMARKS
1	4VP-E7410-00	MAIN AXLE COMP.	1	
2	93311-315Y2	BRG.	1	
3	93306-200Y1	BRG.	1	
4	90201-158K9	WASHER, PLATE	1	
5	90208-15807	WASHER, CONICAL SPRING	1	
6	4VP-E7421-00	AXLE, DRIVE	1	
7	4VP-E7211-00	GEAR, 1ST WHEEL	1	
8	93410-20823	CIRCLIP	1	
9	93306-004X7	BRG.	1	
10	93102-25270	SEAL, OIL	1	
11	99009-42500	CIRCLIP	1	
12	93306-20310	BEARING (B6203)	1	



4VP1414-7110



REF.

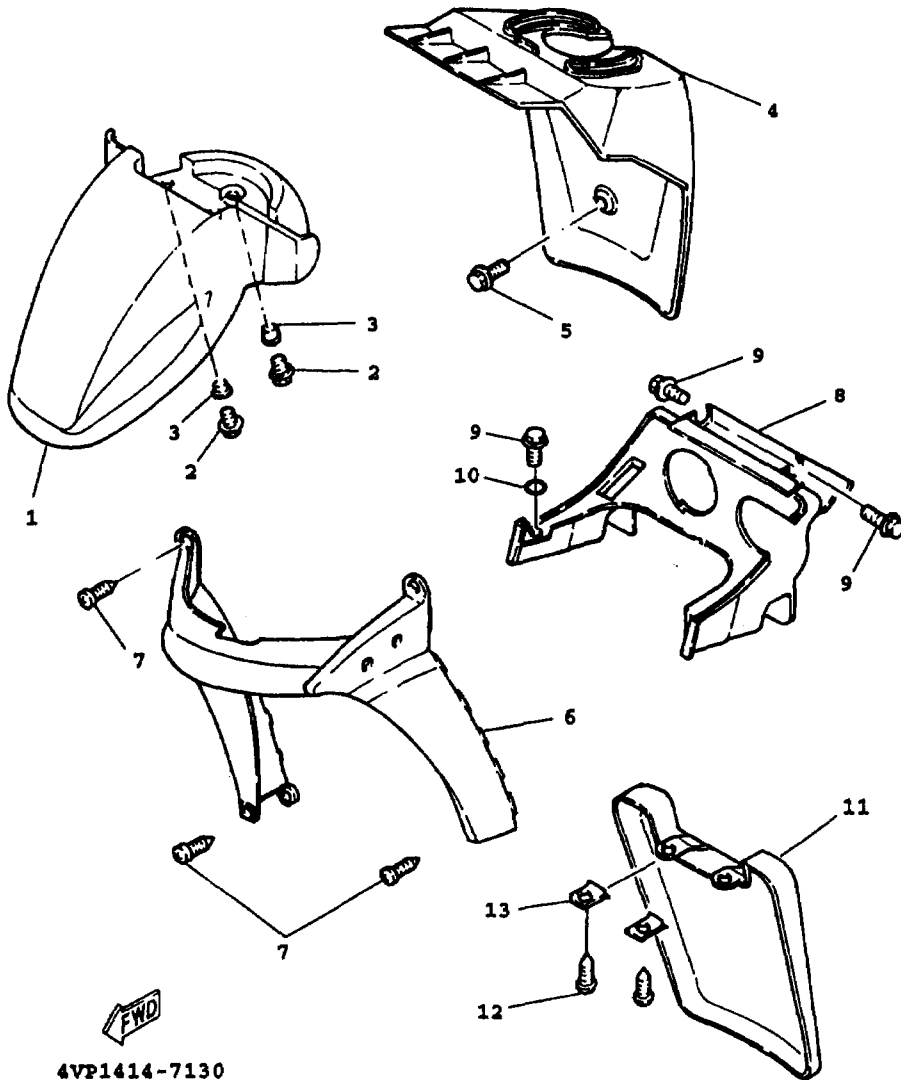
NO.	PART NO.	DESCRIPTION	Q'TY	REMARKS
1	4VP-F1110-10-33	FRAME COMP.	1	YAMAHA BLACK
2	3XG-F1481-00	BOLT, ENGINE MOUNTING 1	1	
3	95607-12200	NUT,U	1	
4	4Y4-F1481-00	BOLT, ENGINE MOUNTING 1	2	
5	95617-10200	NUT,U	2	
6	4VP-F1410-00	ENGINE BRACKET COMP.	1	
7	4Y4-F139X-01	DAMPER	1	
8	90501-29517	SPRING, COMPRESSION	1	
9	4VP-F1514-00	STAY, FENDER 2	1	
10	95807-08035	BOLT, FLG	2	
11	45U-F8100-00	TOOL KIT	1	
12	23Y-F8175-00	HOLDER, TOOL	1	



4VP1414-7120

B15

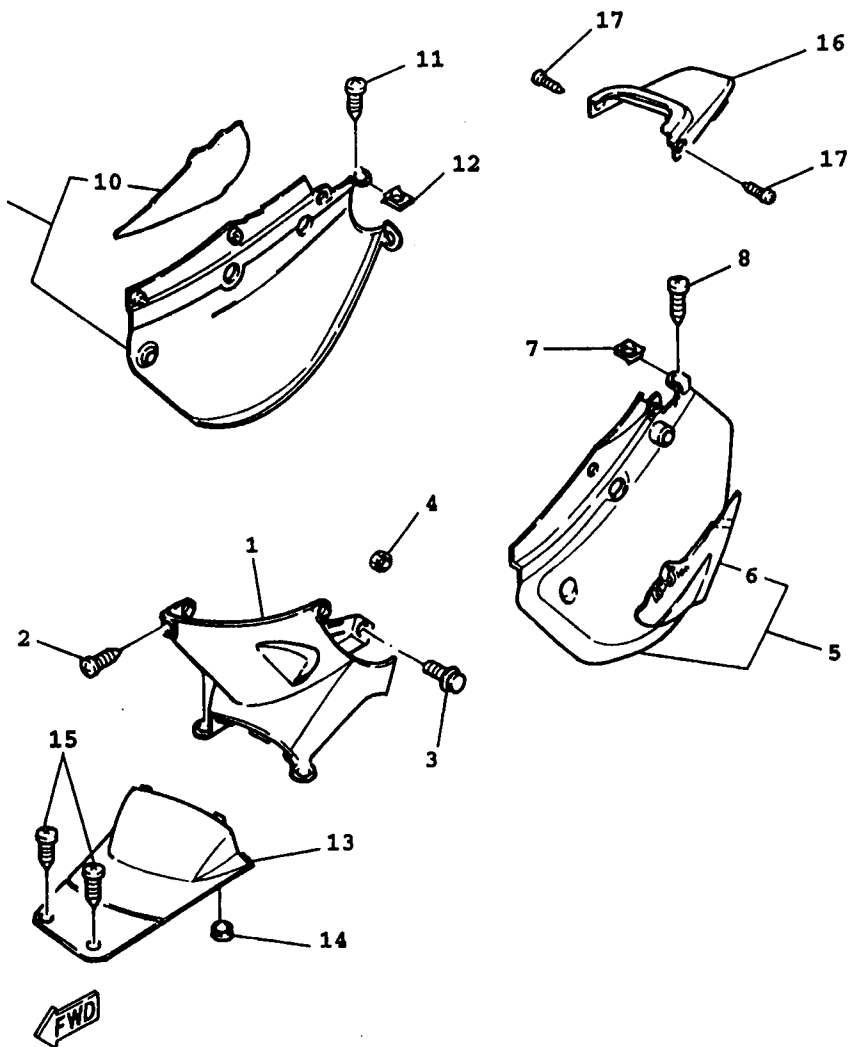
FIG. 13 FENDER



REF.

NO.	PART NO.	DESCRIPTION	QTY	REMARKS
1	4VP-F1511-00	FENDER, FRONT	1	UR BLACK
	4VP-F1511-20	FENDER, FRONT	1	UR BLUE
2	90119-06821	BOLT, WITH WASHER	3	
3	90387-068F8	COLLAR	3	
4	4VP-F1552-00	FENDER, INNER	1	
5	95807-06012	BOLT, FLG	2	
6	4VP-F1519-00	MOLD, FENDER	1	UR BLACK
	4VP-F1519-20	MOLD, FENDER	1	UR BLUE
7	97707-50016	SCREW, TAPPING	4	
8	4VP-F1629-00	GUARD, MUD	1	
9	95807-06012	BOLT, FLG	4	
10	90201-06380	WASHER, PLATE	2	
11	4VP-F1691-00	FLAP	1	
12	97707-50012	SCREW, TAPPING	2	
13	90183-05807	NUT, SPRING	2	

4VP1414-7130



4VP1414-7150

FIG. 14 SIDE COVER

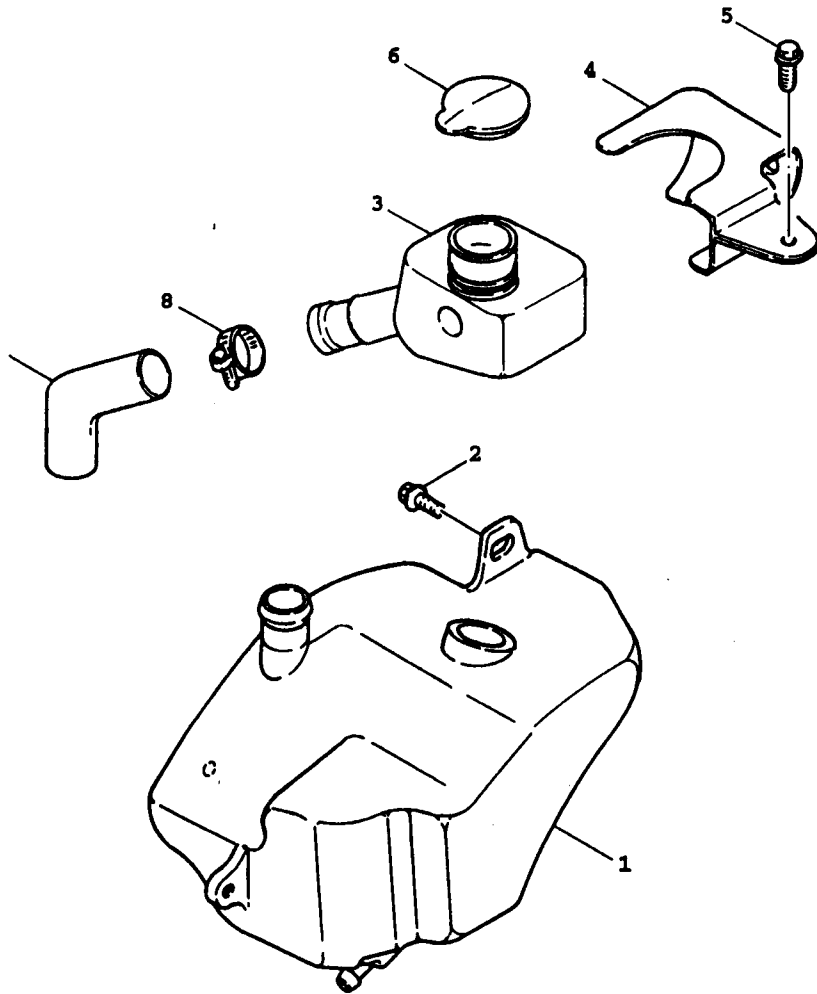
REF.

NO.	PART NO.	DESCRIPTION	Q'TY	REMARKS
1	4VP-F1711-00	COVER, SIDE 1	1	UR BLUE
	4VP-F1711-10	COVER, SIDE 1	1	UR BLACK
2	97707-50012	SCREW, TAPPING	3	
3	90159-06822	SCREW, WITH WASHER	2	
4	2GF-F1535-00	NUT 1	2	
5	4VP-X2172-00-4B	SIDE COVER 2	1	UR BLACK
	4VP-X2172-10-J5	SIDE COVER 2	1	UR BLUE
6	4VP-F173E-00	.GRAPHIC 1	1	UR BLACK
	4VP-F173E-40	.GRAPHIC 1	1	UR BLUE
7	90183-05807	NUT, SPRING	1	
8	97707-50012	SCREW, TAPPING	3	
9	4VP-X2173-00-4B	SIDE COVER 3	1	UR BLACK
	4VP-X2173-10-J5	SIDE COVER 3	1	UR BLUE
10	4VP-F173F-00	.GRAPHIC 2	1	UR BLACK
	4VP-F173F-40	.GRAPHIC 2	1	UR BLUE
11	97707-50012	SCREW, TAPPING	3	
12	90183-05807	NUT, SPRING	1	
13	4VP-F1741-00	COVER, SIDE 4	1	UR BLUE
	4VP-F1741-10	COVER, SIDE 4	1	UR BLACK
14	90480-16278	GROMMET	1	
15	97707-50012	SCREW, TAPPING	2	
16	4VP-F171E-00-4B	COVER, SIDE 5	1	UR BLACK
	4VP-F171E-00-J5	COVER, SIDE 5	1	UR BLUE
17	97707-50012	SCREW, TAPPING	2	

FIG. 15 FRAME

REF.

NO.	PART NO.	DESCRIPTION	Q'TY	REMARKS
1	4VP-F1751-00	TANK, OIL	1	
2	90119-06802	BOLT, WITH WASHER	2	
3	4VP-F1733-00	SUB TANK, OIL	1	
4	4VP-F1734-00	HOLDER, OIL SUB TANK	1	
5	97507-05510	BOLT, W/WASHER	1	
6	4X6-F1771-01	BODY, CAP	1	
7	4VP-F1745-00	PIPE, OIL TANK BREATHER	1	
8	90460-27815	CLAMP, HOSE	2	

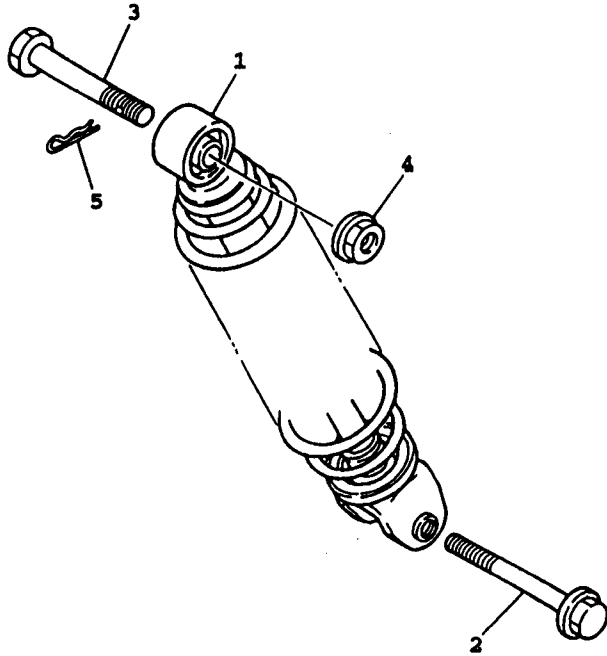


 4VP1414-7170

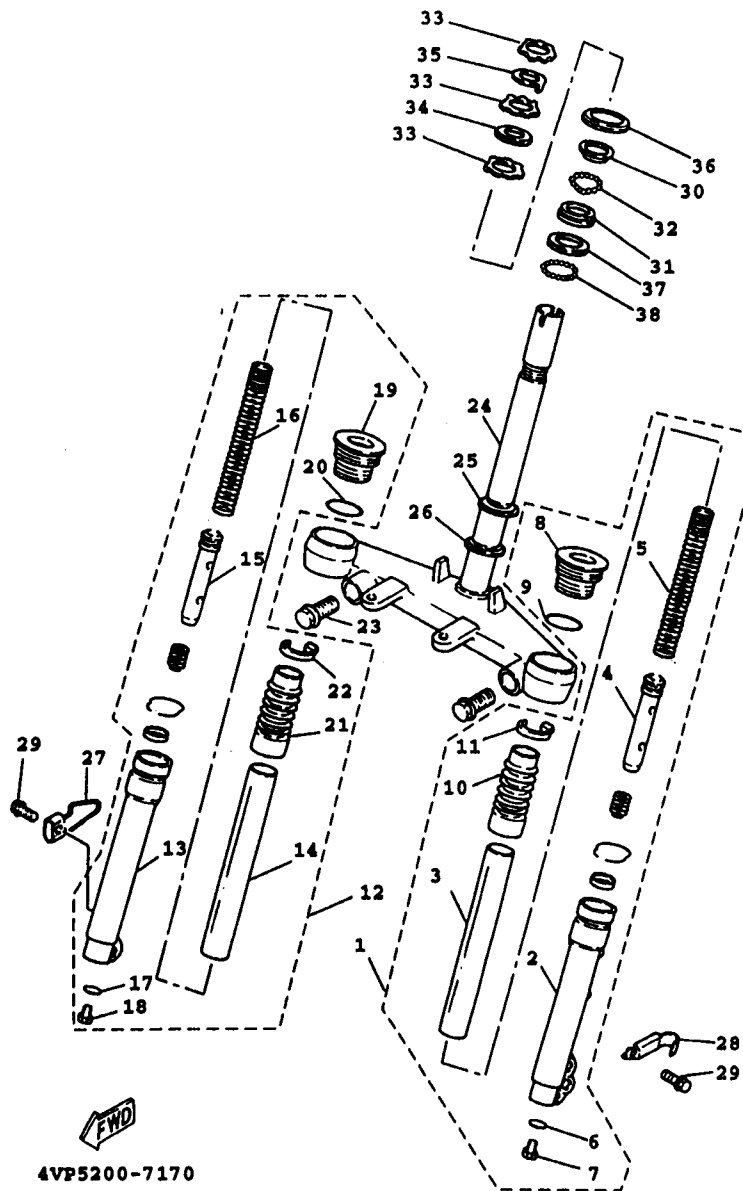
FIG. 16 REAR SUSPENSION

REF.

NO.	PART NO.	DESCRIPTION	Q'TY	REMARKS
1	4WX-F2210-10	SHOCK ABSORBER ASSY, REAR	1	
2	90105-08121	BOLT, WASHER BASED	1	
3	90102-10031	BOLT, WITH HOLE	1	
4	95707-10500	NUT, FLG	1	
5	90468-12006	CLIP	1	



3XG4414-4160



4VP5200-7170

FIG. 17 FRONT FORK

REF.

NO.	PART NO.	DESCRIPTION	Q'TY	REMARKS
1	4WX-F3102-10	FRONT FORK ASSY (L.H)	1	
2	4JL-F3126-00	.TUBE, OUTER 1	1	
3	4WX-F3110-00	.INNER TUBE COMP.1	1	
4	4WX-F3170-00	.CYLINDER COMP.,	1	
5	4WX-F3141-10	.SPRING, FRONT FORK	1	
6	3GF-F3158-00	.GASKET	1	
7	3GF-F3181-00	.BOLT, HEXAGON SOCKET HEAD	1	
8	4WX-F3154-00	.PLUG, INNER TUBE	1	
9	3GF-F3147-00	.O-RING	1	
10	4WX-F3191-10	.BOOT	1	
11	4TE-F3192-00	.BAND	1	
12	4WX-F3103-10	FRONT FORK ASSY (R.H)	1	
13	4JL-F3136-00	.TUBE, OUTER 2	1	
14	4WX-F3110-00	.INNER TUBE COMP.1	1	
15	4WX-F3170-00	.CYLINDER COMP.,	1	
16	4WX-F3141-10	.SPRING, FRONT FORK	1	
17	3GF-F3158-00	.GASKET	1	
18	3GF-F3181-00	.BOLT, HEXAGON SOCKET HEAD	1	
19	4WX-F3154-00	.PLUG, INNER TUBE	1	
20	3GF-F3147-00	.O-RING	1	
21	4WX-F3191-10	.BOOT	1	
22	4TE-F3192-00	.BAND	1	
23	3GF-F3346-00	BOLT 1	2	
24	4WX-F3340-00	UNDER BRACKET COMP.	1	
25	1MH-F3411-00	RACE, BALL 1	1	
26	3KW-F3462-00	SEAL, STEERING	1	
27	3GF-F3317-00	HOLDER, CABLE	1	
28	3GF-F5875-10	HOLDER, BRAKE HOSE 1	1	

FIG. 17 FRONT FORK

REF.

NO.	PART NO.	DESCRIPTION	Q'TY	REMARKS
29	95807-06010	BOLT, FLG	2	
30	22F-23411-01	RACE, BALL 1	1	
31	22F-23412-01	RACE, BALL 2	1	
32	93503-16003	BALL	22	
33	90179-25615	NUT	3	
34	90202-26142	WASHER, PLATE	1	
35	4VP-F3418-00	WASHER, SPECIAL	1	
36	4TE-F3416-00	COVER, BALL RACE 2	1	
37	156-23412-00	RACE, BALL 2	1	
38	93501-04011	BALL	19	
39	3UH-W2341-01	RACE BALL KIT	1	

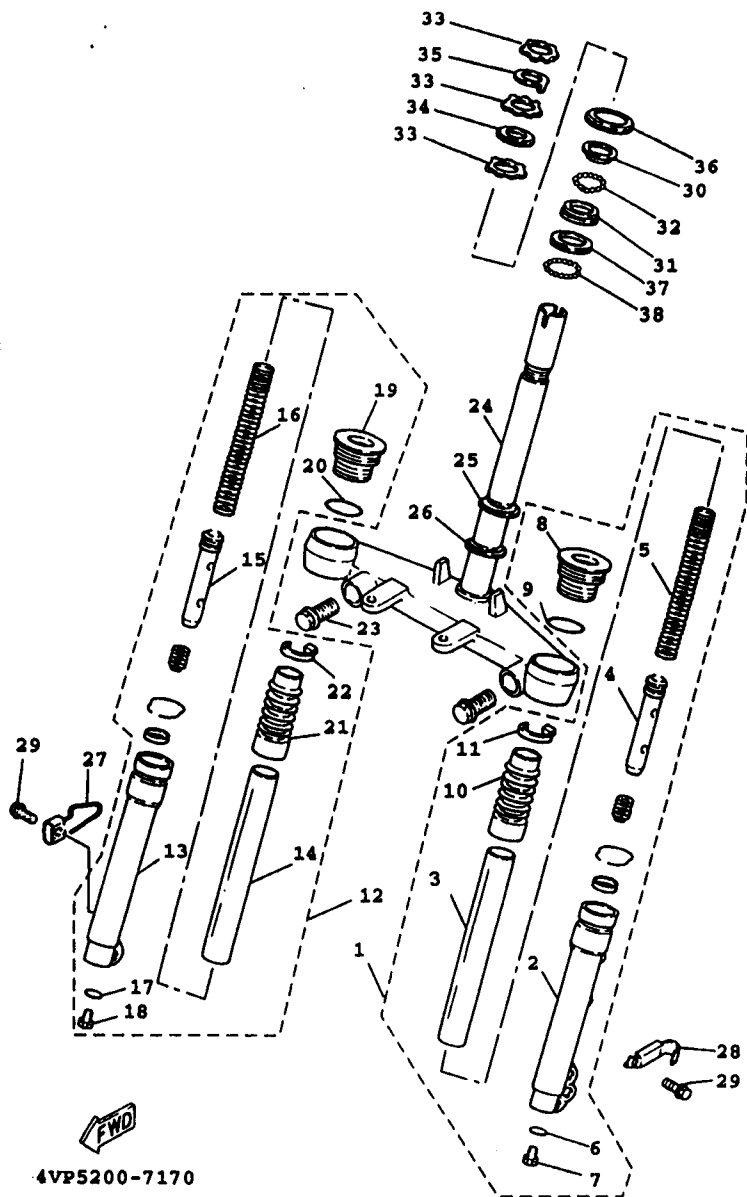
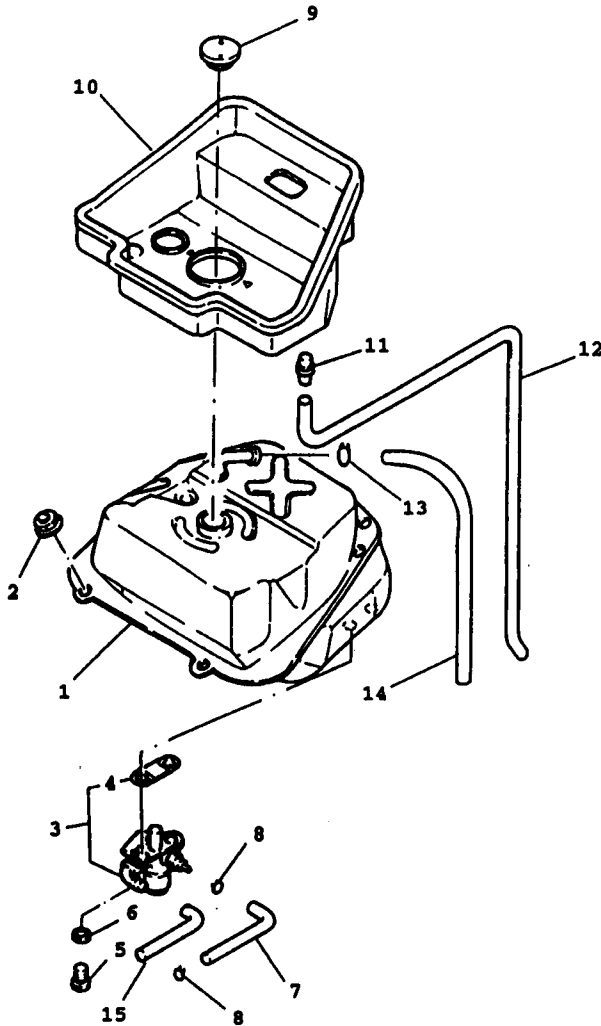


FIG. 18 FUEL TANK

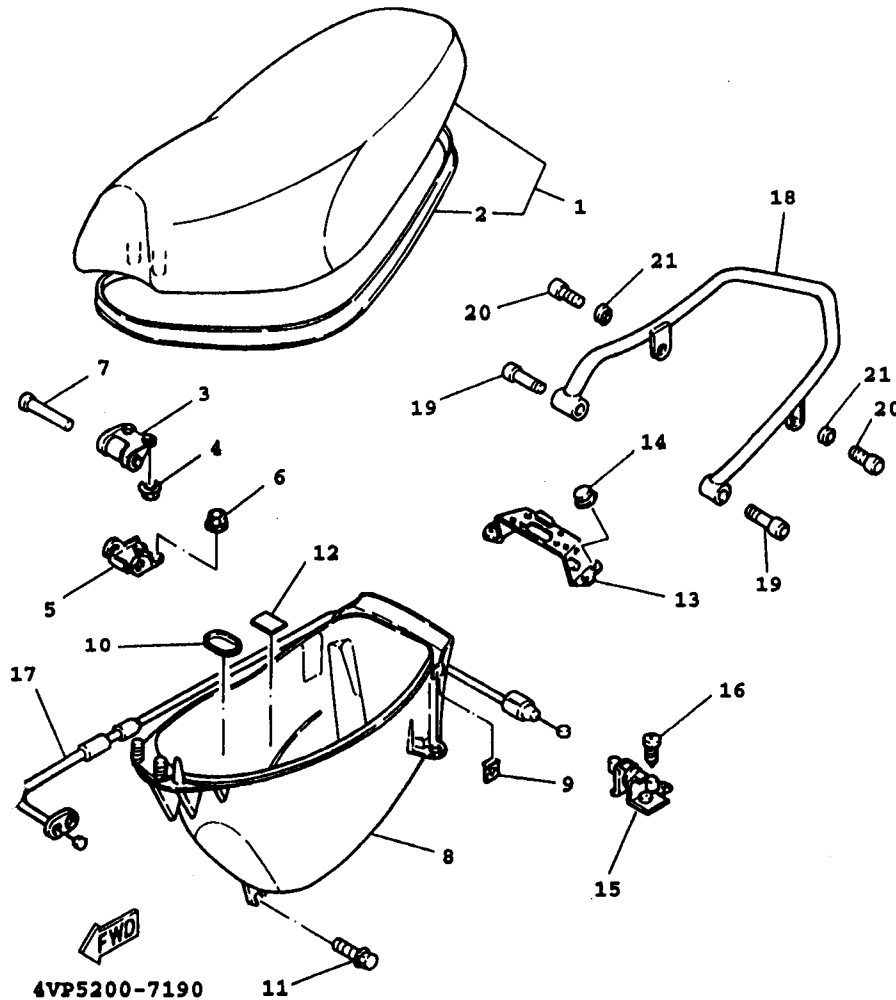
REF.

NO.	PART NO.	DESCRIPTION	Q'TY	REMARKS
1	4VP-F4110-10-33	FUEL TANK COMP.	1	YAMAHA BLACK
2	95707-06500	NUT, FLG	2	
3	4CW-F4500-00	FUEL COCK ASSY 1	1	
4	4CW-F452K-00	.O-RING	1	
5	90149-06011	SCREW	2	
6	90202-05193	WASHER, PLATE	2	
7	4VP-F4311-00	PIPE, FUEL 1	1	
8	90467-09006	CLIP	2	
9	4VP-F4610-00	CAP ASSY	1	
10	4VP-F414A-10	COVER, FILLER	1	
11	4TE-F1753-00	BOSS, CONNECTOR	1	
12	91A10-07056	HOSE	1	
13	90467-09006	CLIP	1	
14	90445-078A3	HOSE	1	
15	90445-105H0	HOSE	1	



4VP5200-7180

FIG. 19 SEAT



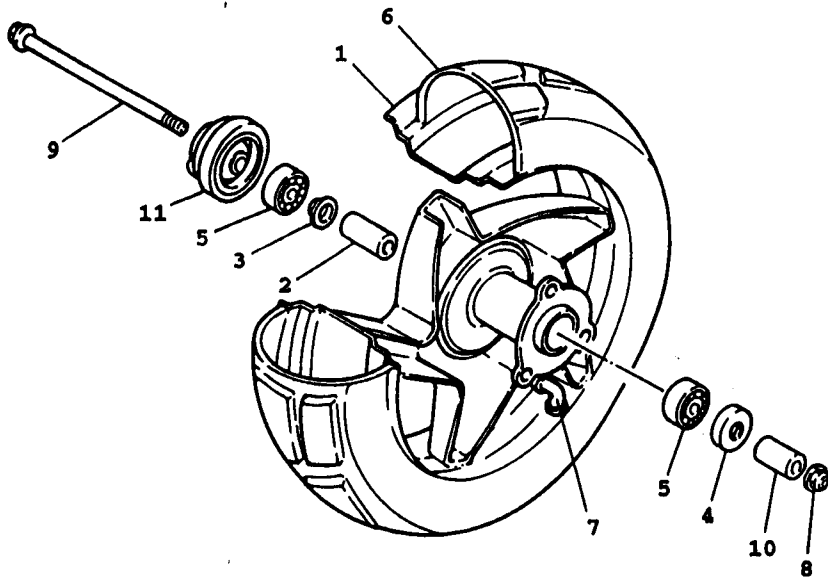
REF.

NO.	PART NO.	DESCRIPTION	Q'TY	REMARKS
1	4VP-F4730-00	DOUBLE SEAT ASSY	1	
2	4VP-F475M-00	.SEAL	1	
3	4CW-F4726-00	HINGE, SEAT	1	
4	95707-06500	NUT, FLG	2	
5	4VP-F4726-00	HINGE, SEAT	1	
6	95707-06500	NUT, FLG	2	
7	90241-10015	PIN	1	
8	4VP-F473R-00	BOX 1	1	
9	90183-05807	NUT, SPRING	2	
10	4VP-F4742-00	GROMMET	1	
11	90109-063F1	BOLT	4	
12	3KW-F139X-00	DAMPER	1	
13	4VP-F4738-00	BRACKET, SEAT	1	
14	95707-06500	NUT, FLG	4	
15	4UE-F4780-01	SEAT LOCK ASSY	1	
16	97007-06016	BOLT, HEX	2	
17	4VP-F478E-00	WIRE, SEAT HOOK	1	
18	4VP-F4812-00-33	HANDLE	1	UR BLACK
	4VP-F4812-00-UJ	HANDLE	1	UR BLUE
19	91317-06040	BOLT, HEX. SOCKET	2	
20	91317-06016	BOLT, HEX. SOCKET	2	
21	92907-06600	WASHER, PLATE	2	

FIG. 20 FRONT WHEEL

REF.

NO.	PART NO.	DESCRIPTION	Q'TY	REMARKS
1	4WX-F5180-00-33	FRONT WHEEL COMP.	1	YAMAHA BLACK
2	4WX-F5183-00	COLLAR, WHEEL	1	
3	20A-F5115-00	FLANGE, SPACER 1	1	
4	93102-17838	SEAL, OIL	1	
5	93306-300Y4	BRG.	2	
6	94112-108S3	TIRE	1	
7	93900-00802	VALVE, RIM	1	
8	95617-10200	NUT, U	1	
9	4WX-F5181-00	AXLE, WHEEL	1	
10	90387-104U5	COLLAR	1	
11	4VP-F5190-00	GEAR UNIT ASSY	1	

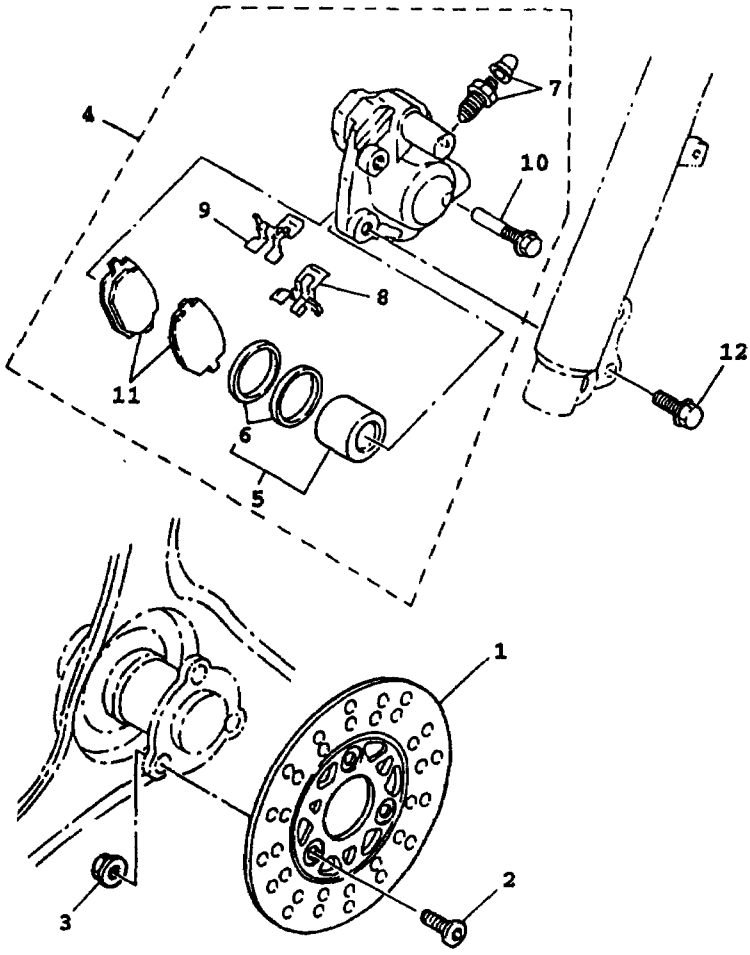


4WX1414-7200

FIG. 21 FRONT BRAKE CALIPER

REF.

NO.	PART NO.	DESCRIPTION	Q'TY	REMARKS
1	3XG-F582T-00	DISC, BRAKE	1	
2	90110-10811	BOLT, HEXAGON SOCKET HEAD	3	
3	9570L-10500	NUT, FLG	3	
4	3XG-F580T-01	CALIPER ASSY (LEFT)	1	
5	3XG-W0057-00	.PISTON ASSY, CALIPER	1	
6	3XG-W0047-00	.CALIPER SEAL KIT	1	
7	3XG-W0048-00	.BREED SCREW KIT	1	
8	3XG-F5919-01	.SUPPORT, PAD	1	
9	3XG-F5919-11	.SUPPORT, PAD	1	
10	3XG-F5926-01	.BOLT	1	
11	3GF-W0045-00	.BRAKE PAD KIT	1	
12	95827-08030	BOLT, FLG	2	



3XG4414-4210

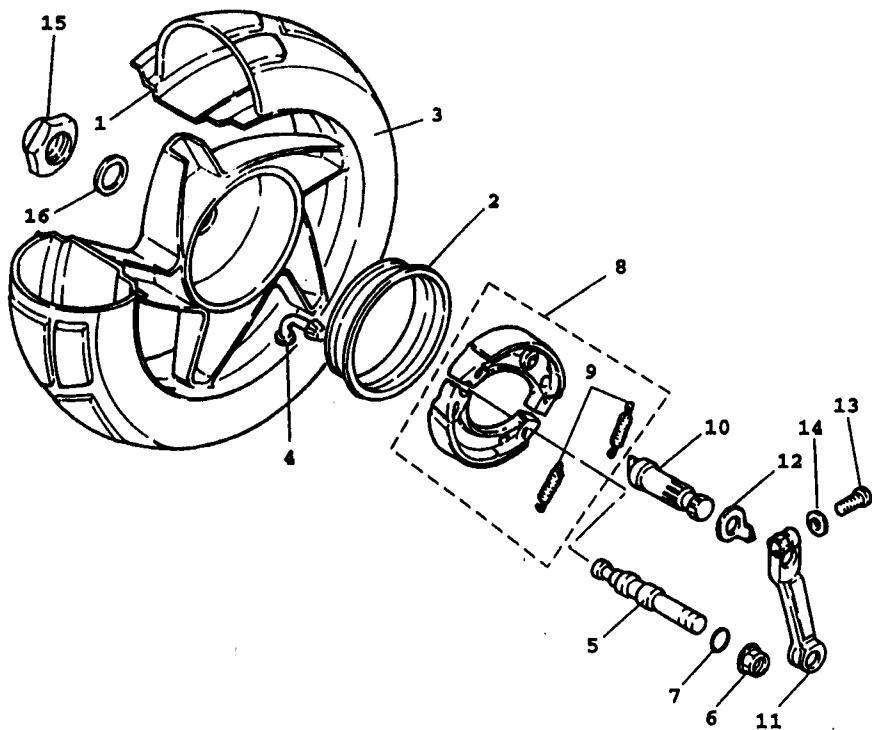


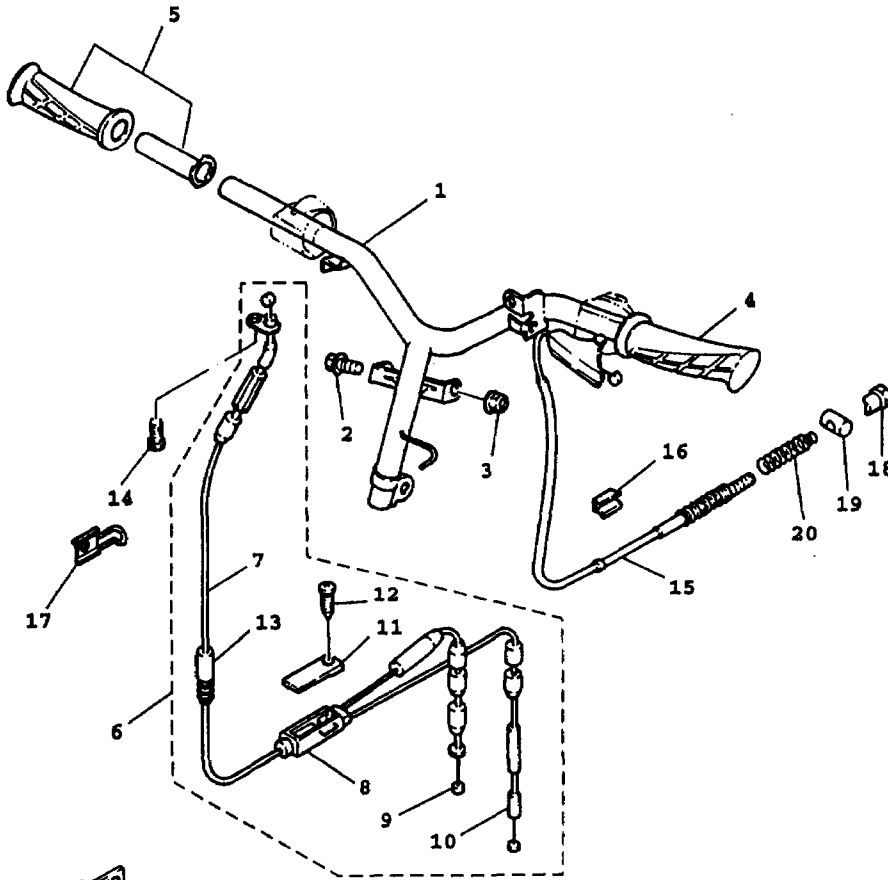
FIG. 22 REAR WHEEL

NO.	PART NO.	DESCRIPTION	Q'TY	REMARKS
1	4WX-F5390-00-33	REAR WHEEL COMP.	1	YAMAHA BLACK
2	4WX-F5336-00	RING 2	1	
3	94113-108S4	TIRE	1	
4	93900-00802	VALVE,RIM	1	
5	3UH-F5326-00	PIN, PIVOT	1	
6	95707-10500	NUT, FLG	1	
7	93210-07890	O-RING	1	
8	4WX-X2533-00	BRAKE SHOE SET	1	
9	90506-16447	.SPRING, TENSION	2	
10	3UH-F5351-00	CAMSHAFT	1	
11	4WX-F5355-00	LEVER, CAMSHAFT	1	
12	4VP-F533A-00	PLATE, INDICATOR	1	
13	90101-06878	BOLT	1	
14	90201-142M6	WASHER, PLATE	1	
15	90185-14124	NUT, SELF-LOCKING	1	
16	90201-203E7	WASHER, PLATE	1	



4WX1414-7220

FIG. 23 STEERING HANDLE. CABLE



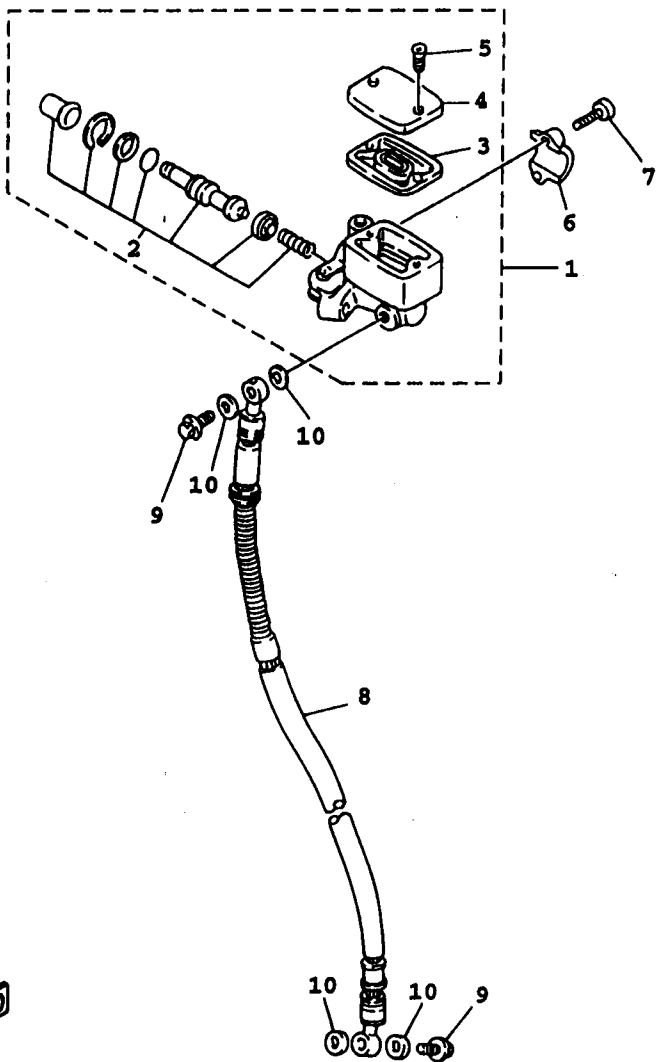
4VP1414-7270

REF.				
NO.	PART NO.	DESCRIPTION	Q'TY	REMARKS
1	4VP-F6110-01	HANDLE COMP.	1	
2	90105-10036	BOLT, WASHER BASED	1	
3	95617-10200	NUT, U	1	
4	4VP-F6241-00	GRIP (LEFT)	1	
5	4VP-F6240-00	GRIP ASSY	1	
6	4VP-W2620-01	CABLE ASSY	1	
7	4VP-F6311-00	.CABLE, THROTTLE 1	1	
8	4VP-F6260-01	.CABLE ASSY, THROTTLE & PUMP	1	
9	4VP-F6321-01	.CABLE, PUMP	1	
10	4VP-F6312-00	.CABLE, THROTTLE 2	1	
11	4VP-F6262-00	.CAP, CABLE CONNECTOR	1	
12	90167-03800	.SCREW, TAPPING	1	
13	4VP-F6266-00	.BOOT, CYLINDER	1	
14	98507-05010	SCREW, PAN HEAD	1	
15	4VP-F6351-00	CABLE, BRAKE	1	
16	4VP-F6393-00	HOLDER	1	
17	4VP-F637G-00	HOLDER, WIRE	1	
18	90179-06411	NUT	1	
19	90249-12008	PIN	1	
20	90501-165J7	SPRING, COMPRESSION	1	

FIG. 24 FRONT MASTER CYLINDER

REF.

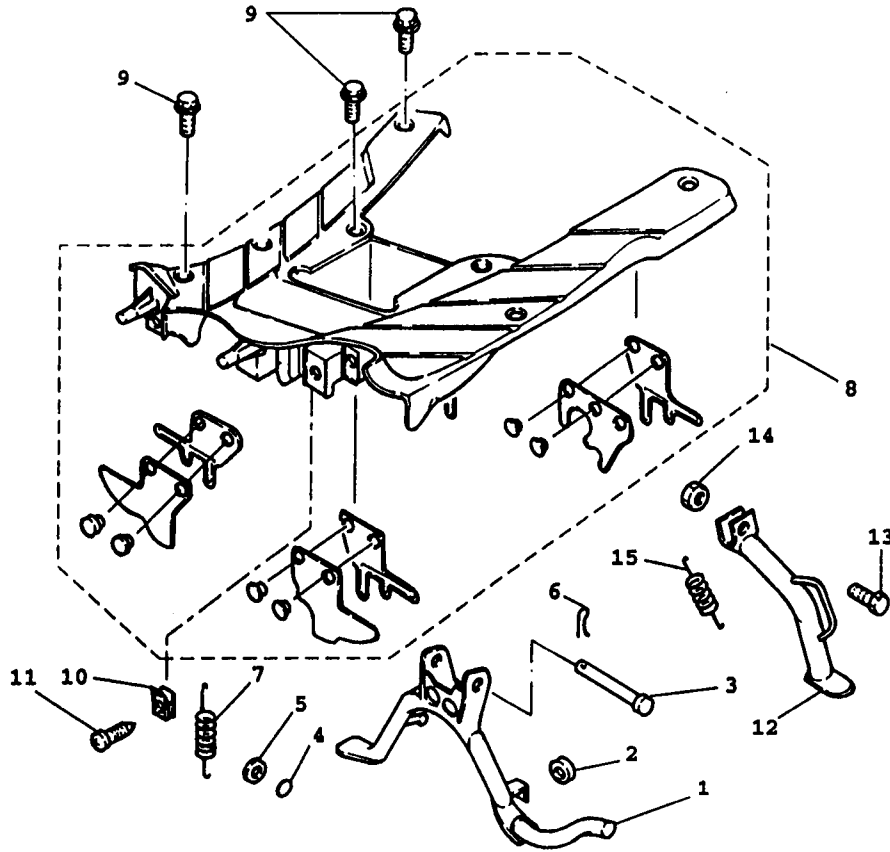
NO.	PART NO.	DESCRIPTION	Q'TY	REMARKS
1	4JL-F5870-00	MASTER CYLINDER SUB ASSY	1	
2	3GF-W0041-00	.CYLINDER KIT, MASTER	1	
3	3GF-F5854-00	.DIAPHRAGM, RESERVOIR	1	
4	3GF-F5852-00	.CAP, RESERVOIR	1	
5	98707-04012	.SCREW, FLAT HEAD (+)	2	
6	3GF-F5867-00	BRACKET, MASTER CYLINDER	1	
7	91317-06025	BOLT, HEX. SOCKET	2	
8	4WX-F5872-01	HOSE, BRAKE 1	1	
9	90401-10805	BOLT, UNION	2	
10	90201-10118	WASHER, PLATE	4	



FWD

3XG4414-4240

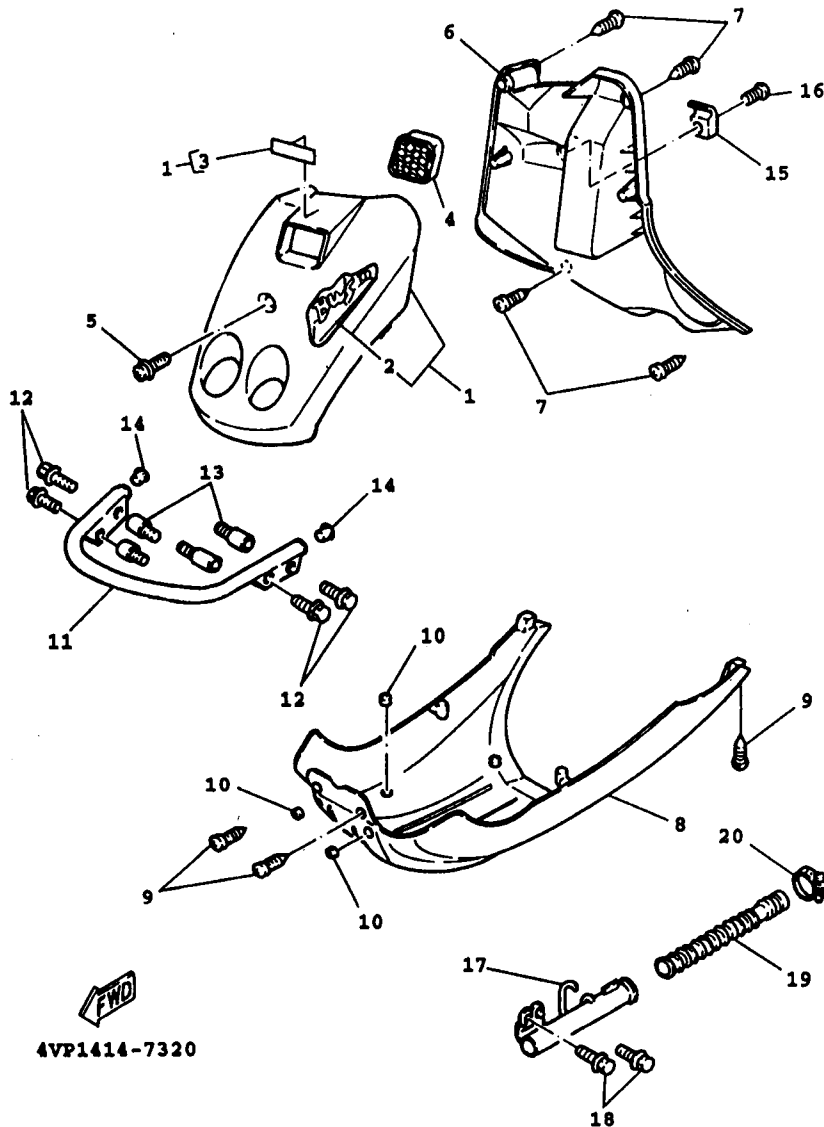
FIG. 25 STAND



REF.	NO.	PART NO.	DESCRIPTION	Q'TY	REMARKS
	1	4VP-F7111-00	STAND, MAIN	1	
	2	4CW-F7114-00	STOPPER, MAIN STAND	1	
	3	90240-10137	PIN, CLEVIS	1	
	4	93210-108B1	O-RING	1	
	5	90202-10120	WASHER, PLATE	1	
	6	90468-12006	CLIP	1	
	7	90506-32857	SPRING, TENSION	1	
	8	4VP-X2748-00	BOARD ASSY, FOOTREST	1	UR BLUE
		4VP-X2748-10	BOARD ASSY, FOOTREST	1	UR BLACK
	9	90119-06821	BOLT, WITH WASHER	6	
	10	90183-05807	NUT, SPRING	8	
	11	97707-50016	SCREW, TAPPING	2	
	12	4VP-F7311-00	STAND, SIDE	1	
	13	90109-10473	BOLT	1	
	14	90185-10037	NUT, SELF-LOCKING	1	
	15	90506-20298	SPRING, TENSION	1	

4VP1414-7300

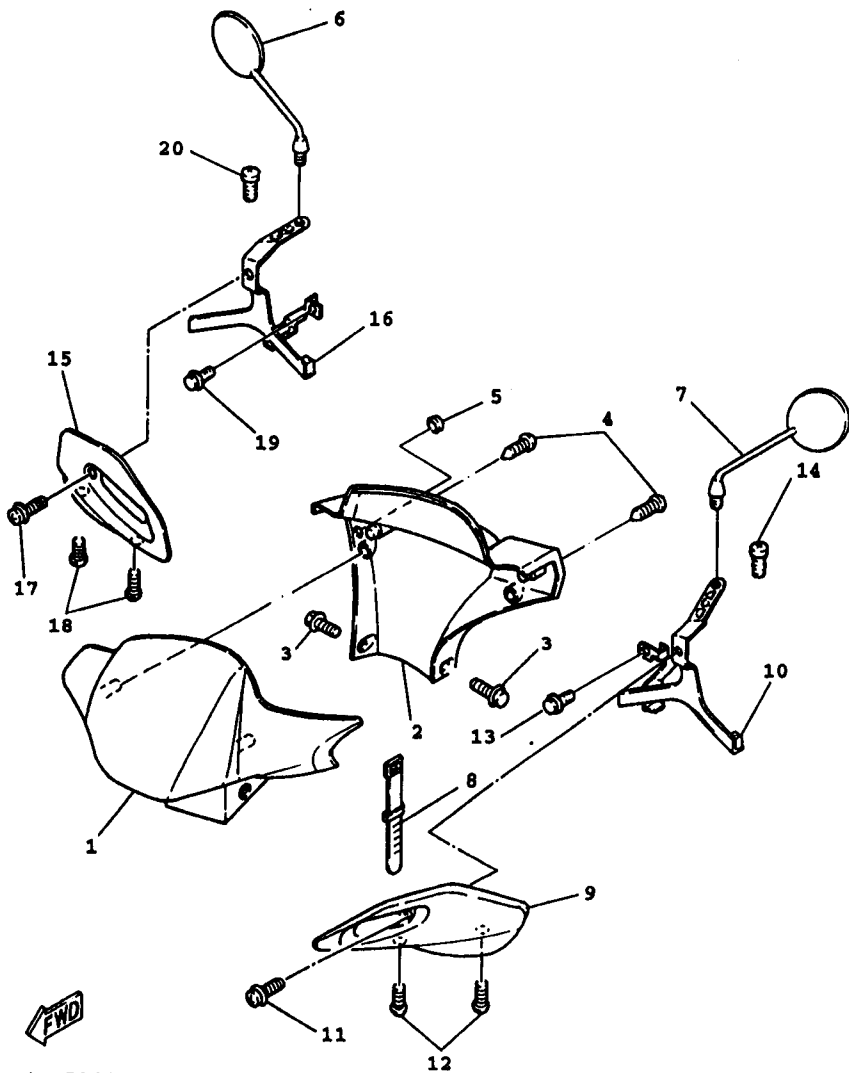
FIG. 26 LEG SHIELD



4VP1414-7320

REF.

NO.	PART NO.	DESCRIPTION	QTY	REMARKS
1	4VP-X2831-00-4B	LEG SHIELD 1	1	UR BLACK
	4VP-X2831-10-J5	LEG SHIELD 1	1	UR OR BLUE
2	4VP-F1569-00	.GRAPHIC 1	1	UR BLACK
	4VP-F1569-40	.GRAPHIC 1	1	UR BLUE
3	99236-00080	.EMBLEM, YAMAHA	1	UR BLACK
	99231-00080	.EMBLEM, YAMAHA	1	UR BLUE
4	4VP-F834V-00	PROTECTOR 1	1	
5	90159-06812	SCREW, WITH WASHER	1	
6	4VP-F8300-00	LEG SHIELD ASSY	1	UR BLUE
	4VP-F8300-10	LEG SHIELD ASSY	1	UR BLACK
7	97707-50016	SCREW, TAPPING	4	
8	4VP-F8385-00	COVER, LOWER	1	UR BLACK
	4VP-F8385-10	COVER, LOWER	1	UR BLUE
9	97707-50016	SCREW, TAPPING	4	
10	3GF-F6199-00	PLUG, BLIND	4	
11	4VP-F840K-00-33	GUARD COMP.	1	UR BLACK
	4VP-F840K-00-UJ	GUARD COMP.	1	UR BLUE
12	95027-06020	BOLT, FLG	4	
13	4VP-F1535-00	NUT 1	4	
14	90338-16148	PLUG	2	
15	4VP-F8257-00	HOOK 1	1	
16	92017-06016	BOLT, BOTTON HEAD	1	
17	4VP-F838K-00	BOX 1	1	
18	95807-06014	BOLT, FLG	2	
19	4VP-F1851-00	DUCT, COOLER	1	
20	90460-35260	CLAMP, HOSE	2	



4VP5200-7270

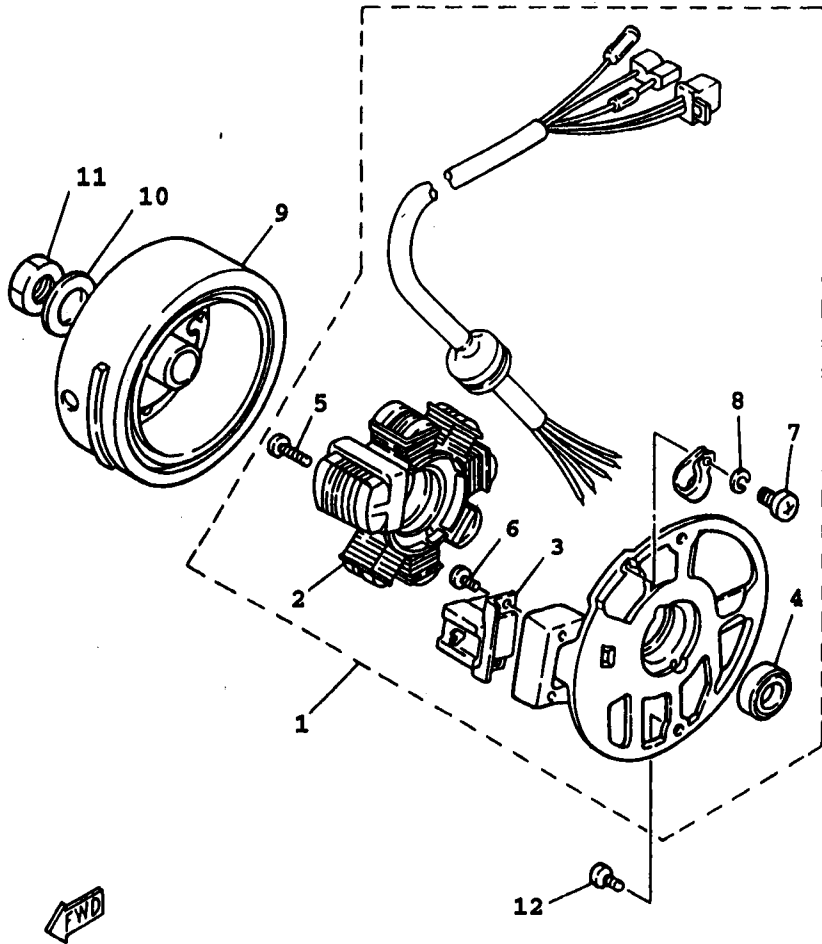
REF.

NO.	PART NO.	DESCRIPTION	Q'TY	REMARKS
1	4VP-F6143-00-4B	COVER, HANDLEBAR UPPER 1	1	UR BLACK
	4VP-F6143-00-J5	COVER, HANDLEBAR UPPER 1	1	UR BLUE
2	4VP-F6145-00	COVER, HANDLEBAR UPPER 2	1	UR BLUE
	4VP-F6145-10	COVER, HANDLEBAR UPPER 2	1	UR BLACK
3	90159-05831	SCREW, WITH WASHER	2	
4	90160-05803	SCREW, ROUND TAPPING	2	
5	3GF-F6199-00	PLUG, BLIND	1	
6	4VP-F6290-00	REAR VIEW MIRROR ASSY	1	
7	4VP-F6280-00	REAR VIEW MIRROR ASSY	1	
8	90465-13275	CLAMP	1	
9	4VP-F6141-00	GUARD, BRUSH 1	1	UR BLACK
	4VP-F6141-10	GUARD, BRUSH 1	1	UR BLUE
10	4VP-F612M-01	BRKT. 4	1	
11	90159-05820	SCREW, WITH WASHER	1	
12	90149-05821	SCREW	2	
13	95807-06012	BOLT, FLG	1	
14	95807-08014	BOLT, FLG	1	
15	4VP-F6142-00	GUARD, BRUSH 2	1	UR BLACK
	4VP-F6142-10	GUARD, BRUSH 2	1	UR BLUE
16	4VP-F612N-01	BRKT. 5	1	
17	90159-05820	SCREW, WITH WASHER	1	
18	90149-05821	SCREW	2	
19	95807-06012	BOLT, FLG	1	
20	4VP-F6225-00	BOLT, HANDLE	1	

FIG. 28 GENERATOR

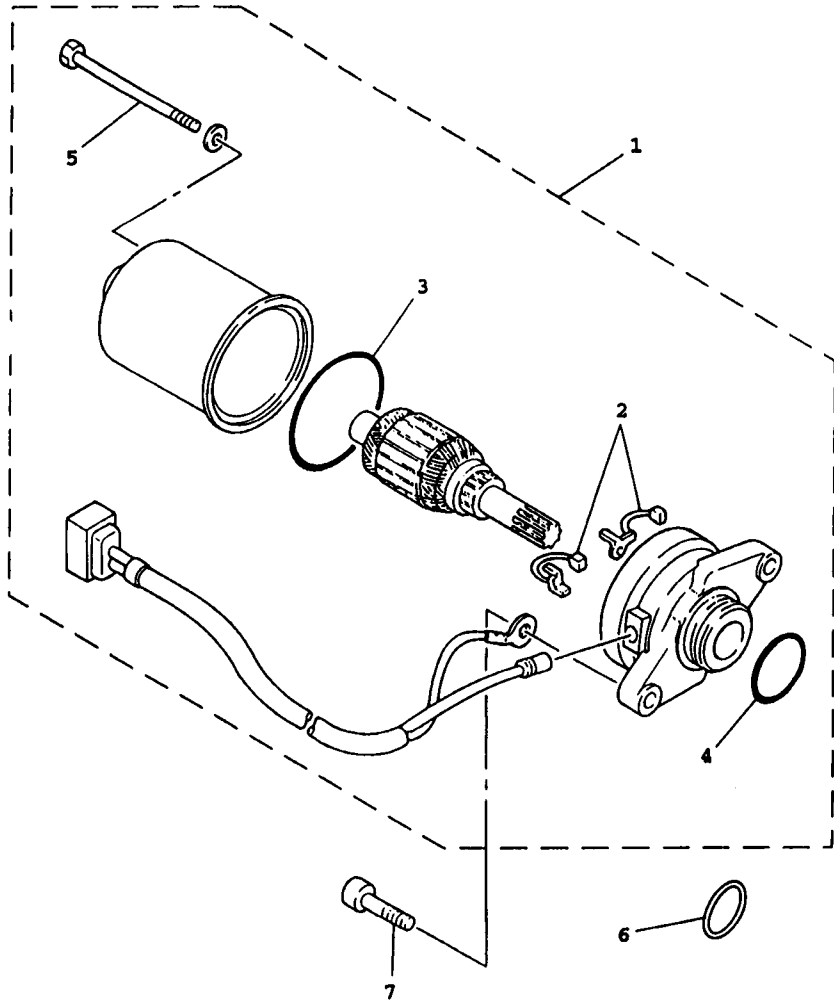
REF.

NO.	PART NO.	DESCRIPTION	Q'TY	REMARKS
1	3XG-H5560-00	BASE ASSY	1	
2	3GF-H1403-V0	.STATORCOMP.	1	
3	3GF-H5580-V0	.COIL, PULSER	1	
4	93104-19097	.SEAL, OIL	1	
5	98501-05020	.SCREW, PAN HEAD (+)	2	
6	9850L-05010	.SCREW, PAN HEAD(+)	2	
7	98580-04008	.SCREW, PAN HEAD (+)	1	
8	92901-04100	.WASHER, SPRING	1	
9	4KX-H5550-00	ROTOR ASSY	1	
10	92907-12600	WASHER, PLATE	1	
11	95307-12600	NUT, HEXAGON	1	
12	98507-06016	SCREW, PAN HEAD	2	



3XG4414-4280

FIG. 29 STARTING MOTOR



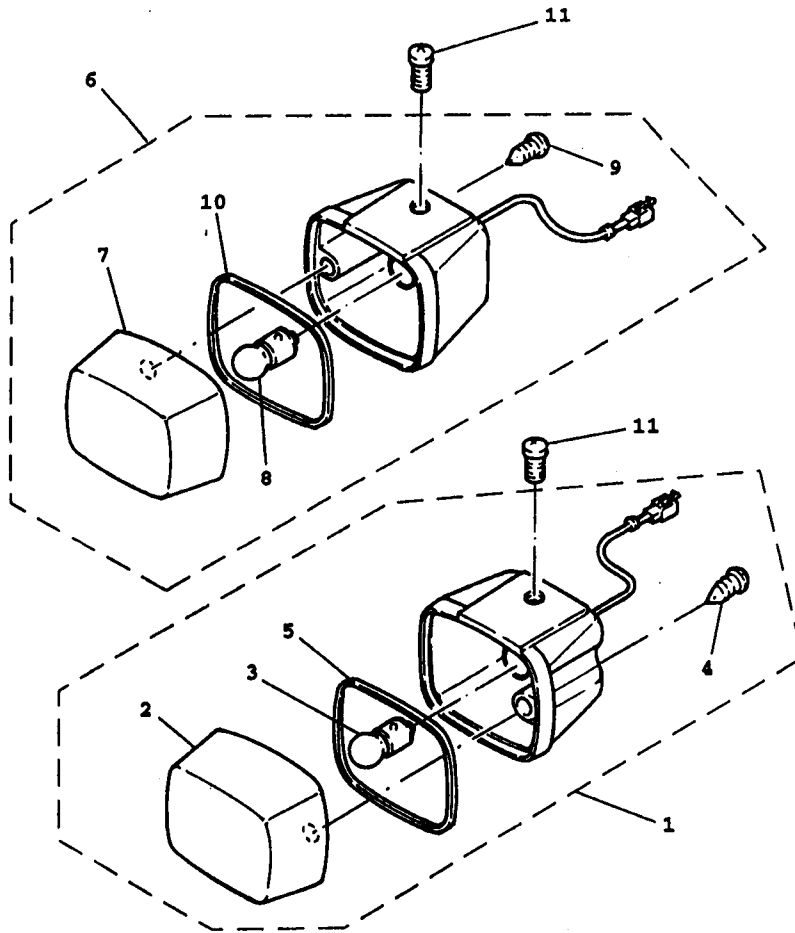
REF.				
NO.	PART NO.	DESCRIPTION	QTY	REMARKS
1	4VP-H1800-00	STARTING MOTOR ASSY	1	
2	4DM-H1801-00	.BRUSH SET	1	
3	93210-44678	.O-RING	1	
4	93210-23614	.O-RING	1	
5	3NW-H1828-V0	.BOLT 2	2	
6	90202-26166	WASHER, PLATE	1	
7	91318-06020	BOLT	2	

FWD

4VP1414-7371

D5

FIG. 30 FLASHER LIGHT



REF.

NO.	PART NO.	DESCRIPTION	Q'TY	REMARKS
1	4VP-H3310-00	FRONT FLASHER LIGHT ASSY 1	1	
2	4VP-H3312-00	.LENS, FLASHER	1	
3	4VP-H3311-00	.BULB, FLASHER	1	
4	97707-40610	.SCREW, TAPPING	1	
5	4VP-H3313-00	.GASKET, FLASHER LENS	1	
6	4VP-H3320-00	FRONT FLASHER LIGHT ASSY 2	1	
7	4VP-H3322-00	.LENS, FLASHER 2	1	
8	4VP-H3311-00	.BULB, FLASHER	1	
9	97707-40610	.SCREW, TAPPING	1	
10	4VP-H3313-00	.GASKET, FLASHER LENS	1	
11	98507-05010	SCREW, PAN HEAD	2	



4VP1414-7380

D6

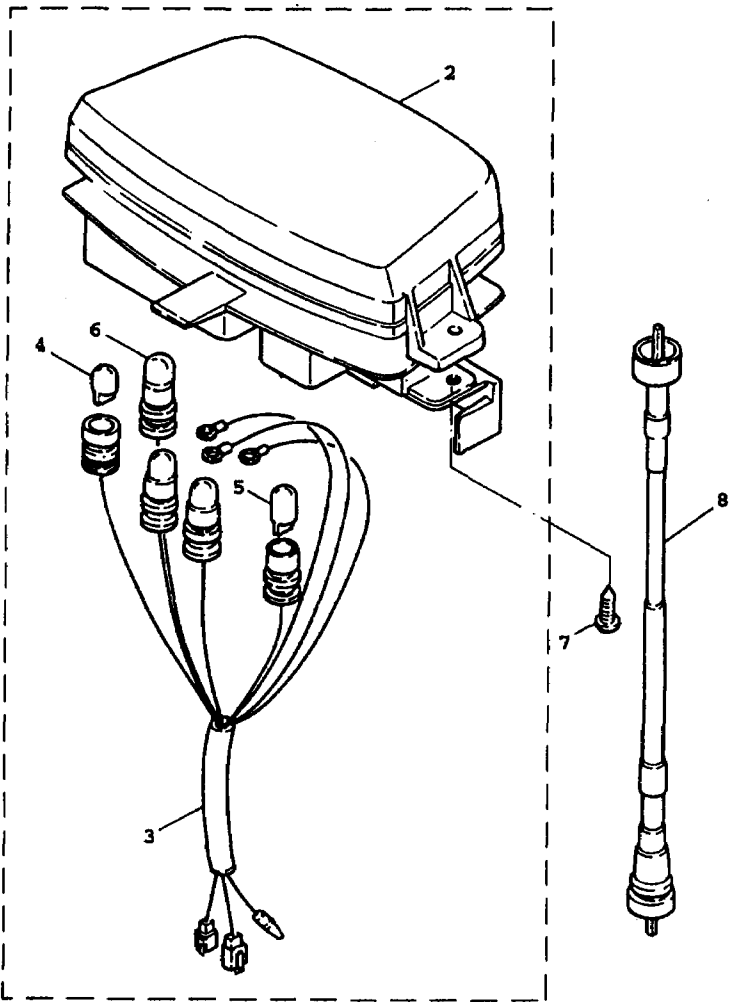


FIG. 31 METER

NO.	PART NO.	DESCRIPTION	QTY	REMARKS
1	4VP-H3510-00	SPEEDOMETER ASSY	1	
2	4VP-H353K-00	.GLASS PLATE	1	
3	4VP-H3509-00	.SOCKET CORD ASSY	1	
4	3GF-H3517-00	.BULB	3	
5	4VP-H3517-00	.BULB	1	
6	4TE-H3518-00	.BULB, METER	1	
7	97707-50016	SCREW, TAPPING	3	
8	4VP-H3550-01	SPEEDOMETER CABLE ASSY	1	

FWD

4VP1414-7391

D7

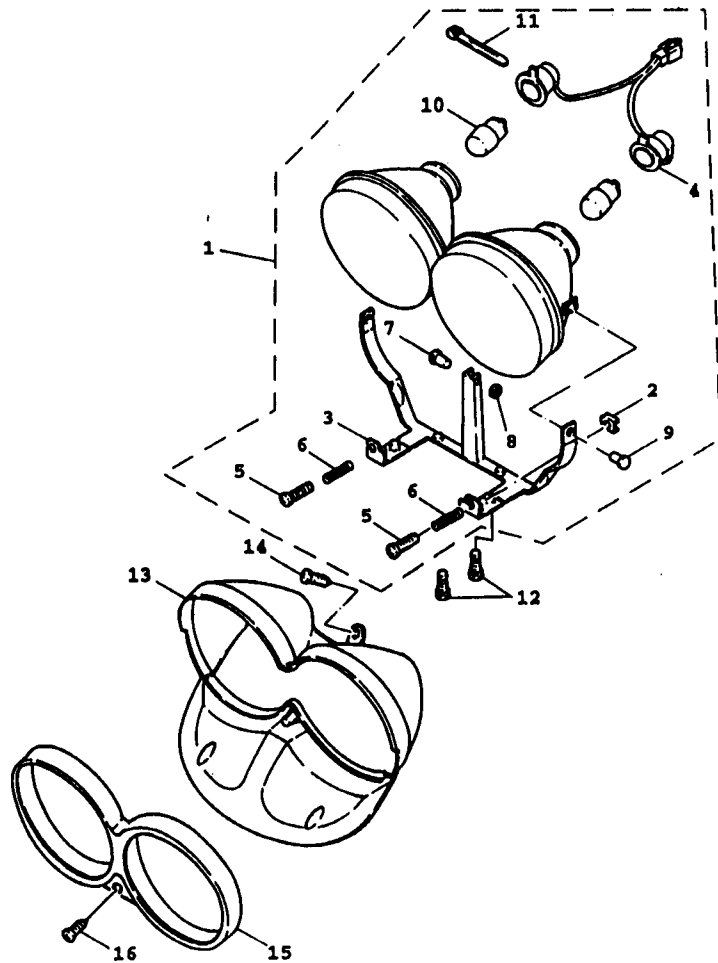


FIG. 32 HEADLIGHT

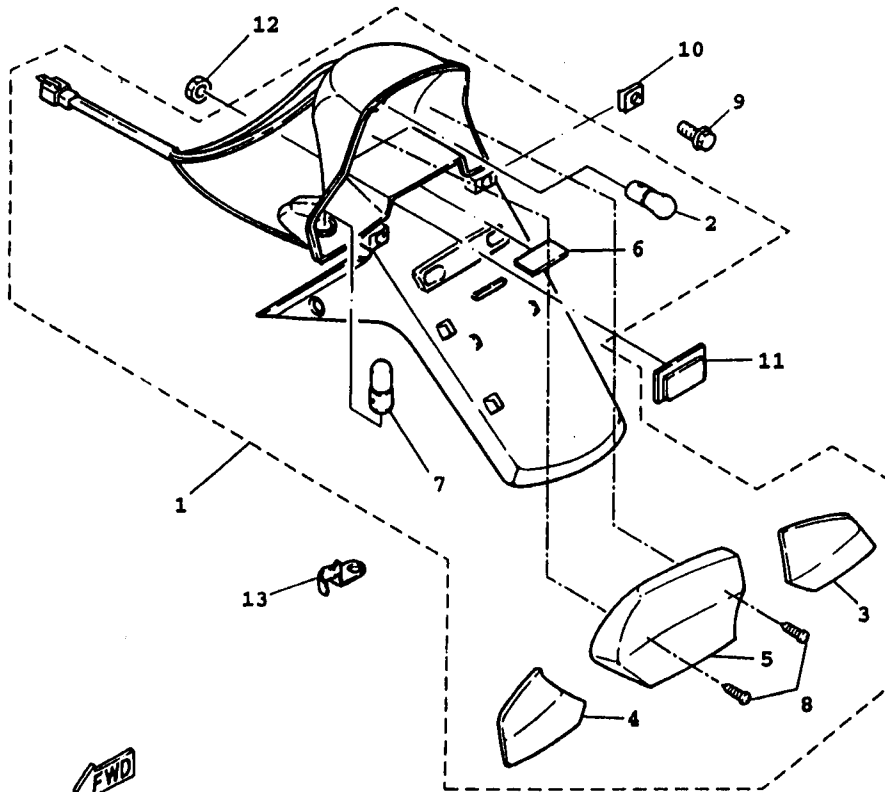
NO.	PART NO.	DESCRIPTION	QTY	REMARKS
1	4VP-H430A-00	HEADLIGHT NUIT	1	
2	4VP-H4317-00	.NUT	2	
3	4VP-H4318-00	.STAY, HEADLIGHT 1	1	
4	4VP-H4359-00	.CORD, HEADLIGHT	1	
5	4VP-H4331-00	.SCREW, RIM ADJUSTING	2	
6	4VP-H4332-00	.SPRING, SCREW	2	
7	4VP-H431V-00	.PIN	1	
8	4VP-H4198-00	.CLIP, COVER FITTING	1	
9	4VP-H4337-00	.BOLT, SPECIAL	2	
10	3UH-H4314-10	.BULB, HEADLIGHT	2	
11	4VP-H4351-00	.CLAMP, CORD	1	
12	95807-06016	BOLT, FLG	4	
13	4VP-H4144-00	COVER, HEADLIGHT	1	
14	97707-50012	SCREW, TAPPING	1	
15	4VP-H4169-00	GUARD, HEADLIGHT	1	
16	90163-05800	SCREW, TAPPING	1	



4VP1414-7401

FIG. 33 TAILLIGHT

REF.				
NO.	PART NO.	DESCRIPTION	Q'TY	REMARKS
1	4VP-H4700-00	TAILLIGHT ASSY	1	
2	4TE-H4714-00	.BULB	1	
3	4VP-H3342-00	.LENS, FLASHER 2	1	
4	4VP-H3332-00	.LENS, FLASHER	1	
5	4VP-H4721-00	.LENS, TAILLIGHT	1	
6	4VP-H4743-00	.LENS, LICENCE LIGHT	1	
7	4VP-H3331-00	.BULB, FLASHER	2	
8	97707-40616	.SCREW, TAPPING	2	
9	90119-06079	BOLT, WITH WASHER	2	
10	90183-05807	NUT, SPRING	4	
11	3KW-H5130-00	REAR REFLECTOR ASSY	1	
12	95707-05300	NUT, FLG	1	
13	4VP-H4519-00	BRACKET, TAILLIGHT	1	

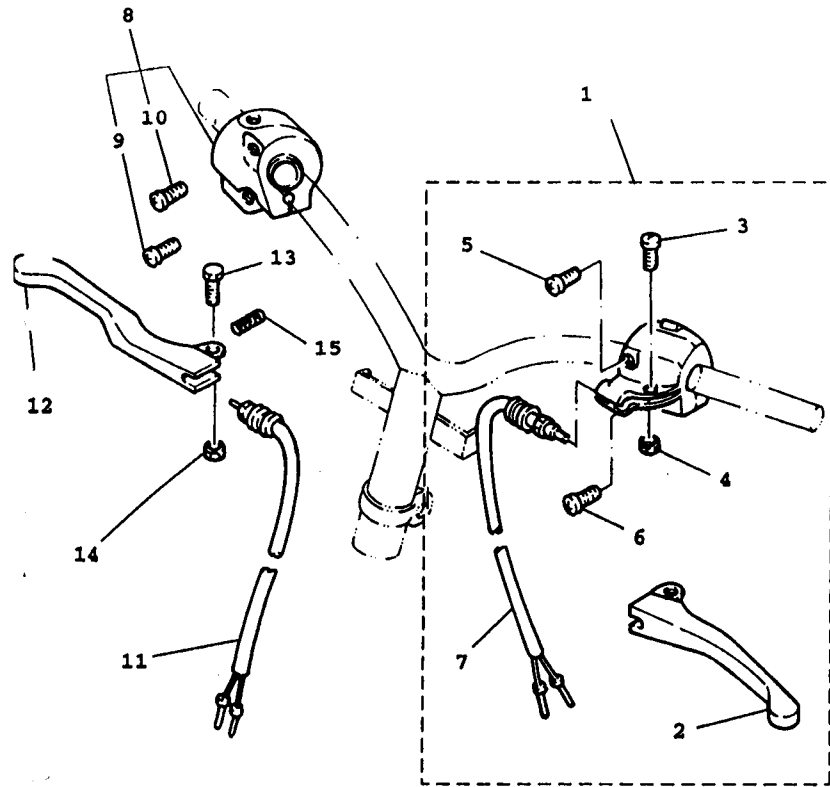


4VP5200-7330

FIG. 34 HANDLE SWITCH. LEVER

REF.

NO.	PART NO.	DESCRIPTION	Q'TY	REMARKS
1	4VP-H2910-00	LEVER HOLDER ASSY (LEFT)	1	
2	4VP-H3912-00	LEVER 1	1	
3	3XG-H3915-00	SCREW, LEVER FITTING	1	
4	95607-05100	NUT, U	1	
5	98507-05020	SCREW, PAN HEAD	1	
6	98507-05030	SCREW, PAN HEAD	1	
7	3XG-H3980-10	FRONT STOP SWITCH ASSY	1	
8	3XG-H3975-30	SWITCH, HANDLE 2	1	
9	98506-05025	SCREW, PAN HEAD (+)	1	
10	98506-05035	SCREW, PAN HEAD (+)	1	
11	3GF-H3980-00	FRONT STOP SWITCH ASSY	1	
12	4VP-H3922-00	LEVER 2	1	
13	90109-06577	BOLT	1	
14	95607-06100	NUT, U	1	
15	90501-10312	SPRING, COMPRESSION	1	



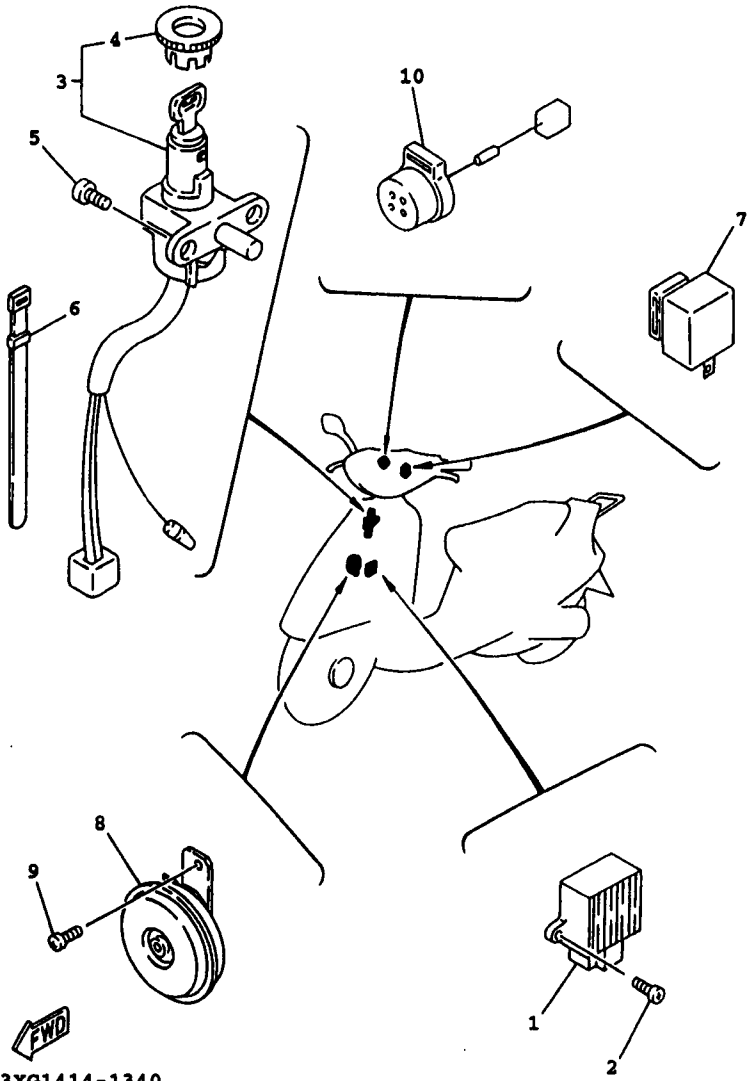
FWD

4VP1414-7420

FIG. 35 ELECTRICAL 1

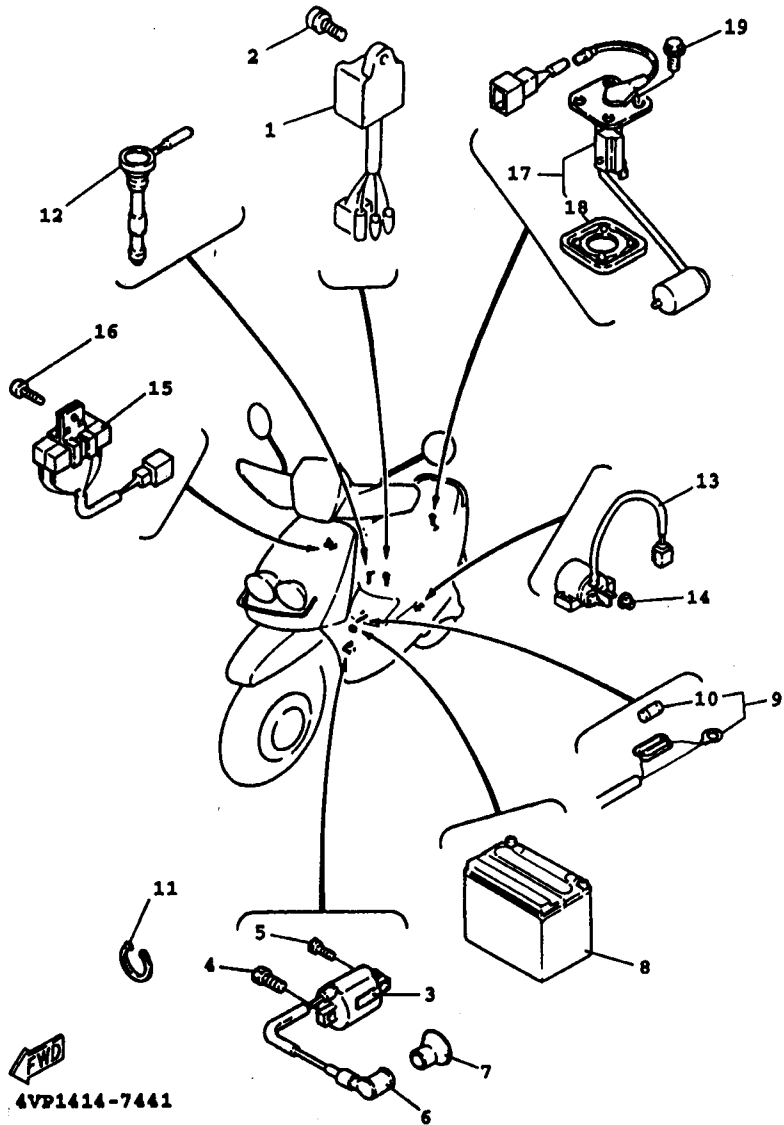
REF.

NO.	PART NO.	DESCRIPTION	Q'TY	REMARKS
1	3GF-H1960-00	RECTIFIER & REGULATOR ASSY	1	
2	98507-05010	SCREW, PAN HEAD	2	
3	4VP-H2501-00	MAIN SWITCH STEERING LOCK	1	
4	4VP-H2552-00	.CAP, SWITCH	1	
5	9760L-06216	SCREW, W/WASHER	2	
6	23Y-H3936-00	BAND, SWITCH CORD	2	
7	1MH-H3350-V0	FLASHER RELAY ASSY	1	
8	4KP-H3371-01	HORN	1	
9	98507-06010	SCREW, PAN HEAD	1	
10	3XY-H3390-01	AUDIO PILOT ASSY	1	



3XG1414-1340

FIG. 36 ELECTRICAL 2



4VP1414-7441

REF.

NO.	PART NO.	DESCRIPTION	Q'TY	REMARKS
1	4DM-H5540-00	C.D.I. UNIT ASSY	1	
2	90159-06056	SCREW, WITH WASHER	1	
3	4VP-H2310-00	IGNITION COIL ASSY	1	
4	97007-06016	BOLT, HEX	1	
5	90153-06839	SCREW, HEXAGON	1	
6	4VP-H2370-00	PLUG CAP ASSY	1	
7	4VP-H2372-00	SEAL, PLUG CAP	1	
8	4EH-H2100-00	BATTERY ASSY	1	
9	4VP-H2590-10	WIRE HARNESS ASSY	1	
10	1NT-H2151-00	. FUSE	1	
11	90465-13275	CLAMP	2	
12	4VP-H5720-00	OIL LEVEL GAUGE ASSY	1	
13	3KW-H1940-01	STARTER RELAY ASSY	1	
14	95307-06600	NUT, HEXAGON	2	
15	3GF-H5370-01	RESISTOR ASSY	1	
16	98507-06020	SCREW, PAN HEAD	1	
17	4VP-X8575-00	SENDER ASSY	1	
18	53X-H5753-00	. GASKET, SENDER UNIT	1	
19	90119-05071	BOLT, WITH WASHER	4	

## NUMERICAL INDEX

PART NO.	REF. NO.	PART NO.	REF. NO.	PART NO.	REF. NO.	PART NO.	REF. NO.	PART NO.	REF. NO.	PART NO.	REF. NO.
4VP-E1111-00	1- 1	4VP-E4708-00	7-10	4VP-F1511-00	13- 1	4WX-F3170-00	17- 4	3GF-F5852-00	24- 4	4VP-F834V-00	26- 4
4VP-E1162-00	1- 4	4VP-E475M-00	7-16	4VP-F1511-20	13- 1	4WX-F3170-00	17-15	3GF-F5854-00	24- 3	4VP-F838K-00	26-17
4VP-E1181-00	1- 2	4CW-E4766-00	7-13	4VP-F1514-00	12- 9	3GF-F3181-00	17- 7	3GF-F5867-00	24- 6	4VP-F8385-00	26- 8
4VP-E1311-00	1- 5	4CW-E4766-00	7-19	4VP-F1519-00	13- 6	3GF-F3181-00	17-18	4JL-F5870-00	24- 1	4VP-F8385-10	26- 8
4VP-E1351-00	1- 6	4UE-E4766-00	7-21	4VP-F1519-20	13- 6	4WX-F3191-10	17-10	4WX-F5872-01	24- 8	4VP-F840K-00-UJ	26-11
4VP-E1400-00	2- 1	4VP-E4779-00	7- 3	2GF-F1535-00	14- 4	4WX-F3191-10	17-21	3GF-F5875-10	17-28	4VP-FB40K-00-33	26-11
4VP-E1412-00	2- 2	4VP-E4799-00	7-15	4VP-F1535-00	26-13	4TE-F3192-00	17-11	3XG-F5919-01	21- 8	3GF-H1403-V0	28- 2
4VP-E1422-00	2- 6	4VP-E5111-00	8- 1	4VP-F1552-00	13- 4	4TE-F3192-00	17-22	3XG-F5919-11	21- 9	4VP-H1800-00	29- 1
4VP-E1631-10-A0	2-13	4VP-E5118-00	8-31	4VP-F1569-00	26- 2	3GF-F3317-00	17-27	3XG-F5926-01	21-10	4DM-H1801-00	29- 2
4VP-E1631-19	2-13	4VP-E5121-00	8- 2	4VP-F1569-40	26- 2	4WX-F3340-00	17-24	4VP-F6110-01	23- 1	3NW-H1828-V0	29- 5
4VP-E1631-29	2-13	4VP-E5128-00	8-28	4VP-F1629-00	13- 8	3GF-F3346-00	17-23	4VP-F612M-01	27-10	3KW-H1940-01	36-13
4VP-E1631-39	2-13	4VP-E5138-10	8-16	4VP-F1691-00	13-11	1MH-F3411-00	17-25	4VP-F612N-01	27-16	3GF-H1960-00	35- 1
4VP-E1633-00	2-14	3XG-E5317-00	8- 9	4VP-F171E-00-J5	14-16	4TE-F3416-00	17-36	4VP-F6141-00	27- 9	4EH-H2100-00	36- 8
4VP-E1651-00	2- 5	4Y4-E5363-00	8-24	4VP-F171E-00-4B	14-16	4VP-F3418-00	17-35	4VP-F6141-10	27- 9	1NT-H2151-00	36-10
4DM-E1681-00	2- 3	3XG-E5371-00	8- 5	4VP-F1711-00	14- 1	3KW-F3462-00	17-26	4VP-F6142-00	27-15	4VP-H2310-00	36- 3
4VP-E2611-00	3-12	4VP-E5373-00	8- 6	4VP-F1711-10	14- 1	4VP-F4110-10-33	18- 1	4VP-F6142-10	27-15	4VP-H2370-00	36- 6
4DY-E262H-00	3- 4	4VP-E5411-00-33	8-17	4VP-F173E-00	14- 6	4VP-F414A-10	18-10	4VP-F6143-00-J5	27- 1	4VP-H2372-00	36- 7
3XG-E2631-00	3-15	4VP-E5421-00	8-11	4VP-F173E-40	14- 6	4VP-F4311-00	18- 7	4VP-F6143-00-4B	27- 1	4VP-H2501-00	35- 3
4VP-E2651-00	3- 1	4VP-E5451-00	8-18	4VP-F173F-00	14-10	4CW-F4500-00	18- 3	4VP-F6145-00	27- 2	4VP-H2552-00	35- 4
4VP-E2653-00	3- 3	4VP-E5461-00	8-12	4VP-F173F-40	14-10	4CW-F452K-00	18- 4	4VP-F6145-10	27- 2	4VP-H2590-10	36- 9
4VP-E2658-00	3-10	3XG-E5462-00	8-30	4VP-F1733-00	15- 3	4VP-F4610-00	18- 9	3GF-F6199-00	26-10	4VP-H2910-00	34- 1
4VP-E2659-00	3-11	4VP-E5477-00	8-33	4VP-F1734-00	15- 4	4CW-F4726-00	19- 3	3GF-F6199-00	27- 5	4VP-H3310-00	30- 1
4VP-E3100-00	4- 1	4VP-E5512-00	9- 7	4VP-F1741-00	14-13	4VP-F4726-00	19- 5	4VP-F6225-00	27-20	4VP-H3311-00	30- 3
3XG-E3342-00	9- 9	4VP-E5524-00	9- 1	4VP-F1741-10	14-13	4VP-F473R-00	19- 8	4VP-F6240-00	23- 5	4VP-H3311-00	30- 8
3XG-E3555-10	5- 6	3XG-E5532-00	9-11	4VP-F1745-00	15- 7	4VP-F4730-00	19- 1	4VP-F6241-00	23- 4	4VP-H3311-00	33- 7
4XG-E3575-01	5- 8	4CW-E5570-00	9- 5	4VP-F1751-00	15- 1	4VP-F4738-00	19-13	4VP-F6260-01	23- 8	4VP-H3312-00	30- 2
4VP-E3610-00	5- 1	4VP-E5601-00	9-13	4TE-F1753-00	18-11	4VP-F4742-00	19-10	4VP-F6262-00	23-11	4VP-H3313-00	30- 5
3XG-E3613-00	5- 2	3XG-E5620-00	9-18	4X6-F1771-01	15- 6	4VP-F475M-00	19- 2	4VP-F6266-00	23-13	4VP-H3313-00	30-10
4XG-E3616-00	5- 3	4VP-E5630-00	9-20	4VP-F1851-00	26-19	4VP-F478E-00	19-17	4VP-F6280-00	27- 7	4VP-H3320-00	30- 6
3XG-E3621-00	5- 5	4VP-E5650-00	9- 6	4WX-P2210-10	16- 1	4UE-F4780-01	19-15	4VP-F6290-00	27- 6	4VP-H3322-00	30- 7
4VP-E4101-20	6- 1	4VP-E5659-00	8-19	4X6-F2216-00	8- 3	4VP-F4812-00-UJ	19-18	4VP-F6311-00	23- 7	4VP-H3332-00	33- 4
4VP-E4411-00	5-11	4VP-E5673-00	9-21	4WX-F3102-10	17- 1	4VP-F4812-00-33	19-18	4VP-F6312-00	23-10	4VP-H3332-00	33- 3
4VP-E4412-00	5-14	4VP-E6611-00	10-15	4WX-F3103-10	17-12	20A-F5115-00	20- 3	4VP-F6321-01	23- 9	1MH-H3350-V0	35- 7
4VP-E443E-00	5-22	4VP-E7211-00	11- 7	4WX-F3110-00	17- 3	4WX-F5180-00-33	20- 1	1MH-F6129-00	6-23	4KP-H3371-01	35- 8
4VP-E4437-00	5-12	4VP-E7410-00	11- 1	4WX-F3110-00	17-14	4WX-F5181-00	20- 9	4VP-F6351-00	23-15	3XY-H3390-01	35-10
4VP-E4445-00	7- 2	4VP-E7421-00	11- 6	4JL-F3126-00	17- 2	4WX-F5183-00	20- 2	4VP-F637G-00	23-17	4VP-H3509-00	31- 3
4VP-E4451-00	5-19	4VP-E7611-00	10-25	4JL-F3136-00	17-13	4VP-F5190-00	20-11	4VP-F6393-00	23-16	4VP-H3510-00	31- 1
4VP-E4452-00	5-20	4VP-E7620-00	10-17	4WX-F3141-10	17- 5	3UH-F5326-00	22- 5	4VP-F7111-00	25- 1	3GF-H3517-00	31- 4
4VP-E4453-00	5-15	4VP-E7623-00	10-20	4WX-F3141-10	17-16	4WX-F533A-00	22-12	4CW-F7114-00	25- 2	4VP-H3517-00	31- 5
4VP-E4462-00	5-17	4VP-F1110-10-33	12- 1	3GF-F3147-00	17- 9	4WX-F5336-00	22- 2	4VP-F7311-00	25-12	4TE-H3518-00	31- 6
4VP-E4463-00	5-16	3KW-F139X-00	19-12	3GF-F3147-00	17-20	3UH-F5351-00	22-10	45U-F8100-00	12-11	4VP-H353K-00	31- 2
4VP-E4467-00	5-18	4Y4-F139X-01	12- 7	4WX-F3154-00	17- 8	4WX-F5355-00	22-11	23Y-F8175-00	12-12	4VP-H3550-01	31- 8
4VP-E4610-20-98	7- 1	4VP-F1410-00	12- 6	4WX-F3154-00	17-19	4VP-F5390-00-33	22- 1	4VP-F8257-00	26-15	4VP-H3912-00	34- 2
1NT-E4613-00	7- 6	3XG-F1481-00	12- 2	3GF-F3158-00	17- 6	3XG-F580T-01	21- 4	4VP-F8300-00	26- 6	3XG-H3915-00	34- 3
4VP-E4627-00	7-11	4Y4-F1481-00	12- 4	3GF-F3158-00	17-17	3XG-F582T-00	21- 1	4VP-F8300-10	26- 6	4VP-H3922-00	34-12

## NUMERICAL INDEX

PART NO.	REF. NO.	PART NO.	REF. NO.	PART NO.	REF. NO.	PART NO.	REF. NO.	PART NO.	REF. NO.	PART NO.	REF. NO.
23Y-H3936-00	35- 6	4VP-X2748-10	25- 8	90105-08121	16- 2	90201-158K9	11- 4	90480-11866	3- 2	93210-64893	3-13
3XG-H3975-30	34- 8	4VP-X2831-00-4B	26- 1	90105-10036	23- 2	90201-163G6	9- 4	90480-12497	3- 7	93306-003Y4	8- 4
3GF-H3980-00	34-11	4VP-X2831-10-J5	26- 1	90109-063F1	19-11	90201-166L3	10-23	90480-12497	5-26	93306-003Y4	9- 2
3XG-H3980-10	34- 7	4VP-X8575-00	36-17	90109-06577	34-13	90201-203E7	22-16	90480-16278	14-14	93306-004X7	11- 9
4VP-H4144-00	32-13	3YR-11603-00	2-15	90109-10473	25-13	90202-05193	18- 6	90501-08845	4-13	93306-200Y1	10- 4
4VP-H4169-00	32-15	3AA-13124-00	4- 5	90110-10811	21- 2	90202-10120	25- 5	90501-10312	34-15	93306-200Y1	11- 3
4VP-H4198-00	32- 8	4VP-13178-00	4-16	90116-07834	1- 7	90202-26142	17-34	90501-165J7	23-20	93306-20310	10- 2
4VP-H430A-00	32- 1	3WF-13185-00	4- 2	90119-05071	36-19	90202-26166	29- 6	90501-29517	12- 8	93306-20310	11-17
4VP-H431V-00	32- 7	1YU-13187-00	4- 3	90119-06079	33- 9	90208-12050	10-28	90501-430K3	10-12	93306-205Y6	2- 1
3UH-H4314-10	32-10	1YU-13473-00	4- 4	90119-06802	15- 2	90208-15807	11- 5	90506-16447	22- 9	93306-300Y4	20- 5
4VP-H4317-00	32- 2	1YU-13516-00	4- 6	90119-06821	13- 2	90209-18112	2- 7	90506-20298	25-15	93310-21403	2-17
4VP-H4318-00	32- 3	1YU-13577-00	4- 7	90119-06821	25- 9	90214-14054	10-26	90506-32857	25- 7	93310-418T0	2- 4
4VP-H4331-00	32- 5	3XG-14103-00	6-18	90149-05821	27-12	90240-10337	25- 3	90506-32768	9-14	93311-315Y2	11- 2
4VP-H4332-00	32- 6	3MB-14104-00	6-12	90149-05821	27-18	90241-10015	19- 7	91A10-07056	18-12	93315-108Y4	9- 8
4VP-H4337-00	32- 9	3XG-14107-00	6-19	90149-06011	18- 5	90249-12008	23-19	91317-06016	19-20	93410-20823	11- 8
4VP-H4351-00	32-11	4VP-14112-35	6- 5	90149-06810	7- 7	90280-03017	2- 8	91317-06025	8-21	93450-16115	2-16
4VP-H4359-00	32- 4	52W-14131-00	6- 3	90153-06839	36- 5	90338-16148	26-14	91317-06025	24- 7	93450-35015	9- 3
4VP-H4519-00	33-13	18A-1414A-65	6- 9	90159-05820	27-11	90380-15817	9-15	91317-06035	8-22	93501-04011	17-38
4VP-H4700-00	33- 1	4VP-14141-11	6- 7	90159-05820	27-17	90387-068F8	13- 3	91317-06040	19-19	93503-16003	17-32
4TE-H4714-00	33- 2	193-14142-35	6-11	90159-05831	27- 3	90387-068J5	3- 6	91317-06045	8-23	93603-12827	4-17
4VP-H4721-00	33- 5	52W-14147-00	6-17	90159-06056	36- 2	90387-068J5	5-25	91318-06020	5- 7	93900-00802	20- 7
4VP-H4743-00	33- 6	522-14161-00	6-22	90159-06812	26- 5	90387-104U5	20-10	91318-06020	8-15	93900-00802	22- 4
3KW-H5130-00	33-11	4VP-14171-00	6-16	90159-06822	14- 3	90387-168N7	10-22	91318-06020	29- 7	94112-108S3	20- 6
3GF-H5370-01	36-15	53L-14186-00	6-20	90160-05803	27- 4	90387-178N6	2-12	91318-06035	8- 8	94113-108S4	22- 3
4DM-H5540-00	36- 1	12R-14191-00	6-13	90163-05800	32-16	90401-10805	24- 9	91318-06035	8-14	94700-00825	1- 3
4KX-H5550-00	28- 9	3XG-14196-00	6-10	90167-03800	23-12	90430-08119	8-27	92017-06016	26-16	95027-06020	26-12
3XG-H5560-00	28- 1	3XG-14198-00	6- 2	90176-06065	7-18	90445-05431	4-10	92901-04100	28- 8	95307-06600	36-14
3GF-H5580-VQ	28- 3	4VP-1490J-00	6- 6	90179-06411	23-18	90445-078A3	18-14	92907-06200	7-17	95307-12600	28-11
4VP-H5720-00	36- 12	3XG-14997-00	6- 8	90179-07381	1- 8	90445-09124	4- 8	92907-06600	19-21	95307-12700	10-29
53X-H5753-00	36-18	14T-15657-00	10-27	90179-10609	10-16	90445-105H0	18-15	92907-12600	28-10	95607-05100	34- 4
3GF-W0041-00	24- 2	4VP-16111-00	10- 1	90179-25615	17-33	90460-27815	15- 8	92990-06600	7- 4	95607-06100	34-14
3GF-W0045-00	21-11	4VP-16620-00	10- 5	90179-28415	10-14	90460-35260	26-20	93101-20169	2-11	95607-12200	12- 3
3XG-W0047-00	21- 6	17L-16626-00	10- 6	90183-05807	13-13	90460-41191	5-27	93101-21170	10-18	95617-10200	12- 5
3XG-W0048-00	21- 7	4VP-17632-00	10-19	90183-05807	14- 7	90464-16801	4-12	93102-17467	10- 3	95617-10200	20- 8
3XG-W0057-00	21- 5	4VP-17641-00	10-24	90183-05807	14-12	90465-13275	27- 8	93102-17838	20- 4	95617-10200	23- 1
4VP-W1441-00	5-10	4CW-17653-10	10-21	90183-05807	19- 9	90465-13275	36-11	93102-22464	2-10	9570L-10500	21- 3
4VP-W1442-00	5-13	4VP-17660-00	10- 7	90183-05807	25-10	90467-08003	4- 9	93102-25270	11-10	95707-05300	33-12
3UH-W2341-01	17-39	24G-17664-00	10-11	90183-05807	33-10	90467-09006	18- 8	93104-19097	28- 4	95707-06500	18- 2
4VP-W2620-01	23- 6	3FC-17670-00	10- 8	90185-10037	25-14	90467-09006	18-13	93109-33052	10- 9	95707-06500	19- 4
4VP-X2172-00-4B	14- 5	3XG-17684-00	10-13	90185-14124	22-15	90467-11823	5-23	93210-07890	22- 7	95707-06500	19- 6
4VP-X2172-10-J5	14- 5	22F-23411-01	17-30	90201-06380	13-10	90467-24140	5- 9	93210-108B1	25- 4	95707-06500	19-14
4VP-X2173-00-4B	14- 9	156-23412-00	17-37	90201-08088	9-10	90468-02033	4-11	93210-14805	8-25	95707-10500	16- 4
4VP-X2173-10-J5	14- 9	22F-23412-01	17-31	90201-10118	24-10	90468-02033	4-14	93210-23614	29- 4	95707-10500	22- 6
4WX-X2533-00	22- 8	90101-06878	22-13	90201-142M6	22-14	90468-12006	16- 5	93210-384A6	10-10	95807-06010	17-29
4VP-X2748-00	25- 8	90102-10031	16- 3	90201-155G5	9-16	90468-12006	25- 6	93210-44678	29- 3	95807-06012	13- 5

## NUMERICAL INDEX

PART NO.	REF. NO.	PART NO.	REF. NO.	PART NO.	REF. NO.	PART NO.	REF. NO.	PART NO.	REF. NO.
95807-06012	13- 9	98507-05020	34- 5						
95807-06012	27-13	98506-05025	34- 9						
95807-06012	27-19	98506-05035	34-10						
95807-06014	26-18	98507-03006	6-15						
95807-06016	32-12	98507-04012	6-21						
95807-08014	27-14	98507-05010	23-14						
95807-08016	8-26	98507-05010	30-11						
95807-08035	12-10	98507-05010	35- 2						
95817-08020	7- 8	98507-05014	4-15						
95817-08030	7- 9	98507-05020	74- 1						
27-08030	21-12	98507-05030	34- 6						
97007-06016	19-16	98507-06010	35- 9						
97007-06016	36- 4	98507-06012	8-29						
97017-06010	7-12	98507-06012	8-32						
97017-06025	9-19	98507-06012	9-12						
97380-06008	7- 5	98507-06016	28-12						
97507-05510	15- 5	98507-06020	36-16						
97517-06510	7-14	98580-04008	28- 7						
9760L-06216	35- 5	98707-04012	24- 5						
97607-03206	5- 4	98980-06012	7-20						
97607-04108	6-14	99009-15400	9-17						
97607-04112	6- 4	99009-17400	8-10						
97607-06216	3-14	99009-19400	4-18						
97607-06220	3- 8	99009-42500	11-11						
97607-06220	5-24	99231-00080	26- 3						
97607-06220	8-34	99236-00080	26- 3						
97707-40514	3- 5	99530-10114	8-13						
97707-40610	30- 4	99530-10114	8-20						
97707-40610	30- 9	99530-12016	8- 7						
97707-40616	33- 8								
97707-50012	13-12								
97707-50012	14- 2								
97707-50012	14- 8								
97707-50012	14-11								
97707-50012	14-15								
97707-50012	14-17								
97707-50012	32-14								
97707-50016	13- 7								
97707-50016	25-11								
97707-50016	26- 7								
97707-50016	26- 9								
97707-50016	31- 7								
97707-50125	5-21								
97707-60540	3- 9								
9850L-05010	28- 6								